


2020 VISION



> YOUR
FUTURE'S
CLEAR

A photograph showing a group of young people, likely students, walking through a modern glass entrance of a building. They are dressed in casual attire like hoodies and jackets. The scene is brightly lit, suggesting an indoor or well-lit outdoor area. The text is overlaid on the right side of the image.

> NOT ONLY IS SOUTHPORT COLLEGE
A GREAT PLACE TO STUDY,
WE ALSO HAVE THE BEST OVERALL
ACHIEVEMENT RATE FOR 16-18
YEARS OLDS OF ANY FURTHER
EDUCATION COLLEGE IN
MERSEYSIDE.

CONTENTS

COURSE LISTINGS	6
REASONS TO CHOOSE SOUTHPORT COLLEGE	8
OFSTED SAY	10
THE PRINCIPAL	11
VOCATIONAL QUALIFICATIONS	12
APPLYING TO SOUTHPORT COLLEGE	14
FACILITIES AT SOUTHPORT COLLEGE	16
STUDENT INFORMATION CENTRE	18
LEARNER SUPPORT	19
STUDENT ENRICHMENT	20
ENGLISH & MATHS	24
AWARDS EVENTS	26
STUDENT DESTINATIONS	28
STUDENT SUCCESS	30
INDUSTRY LINKS	32
TRAINEESHIPS	34
APPRENTICESHIPS	36
FIND YOUR LEVEL	38
GETTING IT RIGHT	146
GETTING TO SOUTHPORT COLLEGE	148
VISIT US	150

BUILD

Bricklaying	42
Building Services Engineering	44
Construction Surveying & Architecture	46
Electrical Installation	48
Engineering	50
Motor Vehicle Engineering	52
Painting & Decorating	54
Plumbing	56

CARE

Childcare	60
Health & Social Care	62

INVESTIGATE

Forensic & Criminal Investigation	110
Science	112

CREATE

Art & Design	66
Creative Media Production	72
Games Design	76
Graphic Design	80
Performing Arts	84
Photography	88

PROGRESS

Connect	118
Aspire	120
Ambition	122

EXPLORE

Public Services	94
Sport	96
Travel & Tourism	100

TASTE

Hospitality	126
Professional Cookery	128
Guest Chef Nights	130
Clouds Restaurant	132

GENERATE

Business	104
Computing	106

TRANSFORM

Beauty	136
Nails	138
Hairdressing	140
Hair & Beauty	142s
Concept Salons	144

COURSE LISTINGS

Here is a quick guide to all our school leaver courses and their entry requirements. You will find more detailed information on each of the course pages.

Course	Level	Entry Requirements
Connect		
Connect	Entry Level 1 & 2	Successful interview, assessment and taster session with satisfactory reference
Aspire		
Aspire	Entry Level 3	Successful interview and assessment with a satisfactory reference
Art & Design		
Creative Design	Level 1 (Ambition)	Minimum 1 GCSE at grade 3 (D), 2 GCSEs at grade 2 (F) and maths and English at grade 1
Art & Design	Level 2	Minimum 1 GCSE at grade 4 and 2 GCSEs at grade 3 (D) including English and maths
Art & Design	Level 3 Ext Dip	5 GCSEs at grade 9-4 (A*- C) including maths and/or English
Beauty		
Hairdressing & Beauty Therapy	Level 1 (Ambition)	Minimum 1 GCSE at grade 3 (D), 2 GCSEs at grade 2 (F) and maths and English at grade 1
Beauty Therapy	Level 2	Minimum 1 GCSE at grade 4 and 2 GCSEs at grade 3 (D) including English and maths
Nail Services	Level 2	Minimum 1 GCSE at grade 4 and 2 GCSEs at grade 3 (D) including English and maths
Beauty Therapy	Level 3	Pass at Level 2 in a related subject and a minimum grade 4 in maths and/or English
Bricklaying		
Bricklaying	Level 1	3 GCSEs at grade 3 (E) and English and maths at grade 2
Bricklaying	Level 2	Minimum 1 GCSE at grade 4 and 2 GCSEs at grade 3 (D) including English and maths
Bricklaying	Level 3	Pass at Level 2 in a related subject and a minimum grade 4 in maths and/or English
Building Services Engineering		
Access to Building Services Engineering	Level 2	Minimum 1 GCSE at grade 4 and 2 GCSEs at grade 3 (D) including English and maths
Business		
Retail	Level 1 (Ambition)	Minimum 1 GCSE at grade 3 (D), 2 GCSEs at grade 2 (F) and maths and English at grade 1
Business Administration	Level 2	Minimum 1 GCSE at grade 4 and 2 GCSEs at grade 3 (D) including English and maths
Childcare		
Health & Childcare	Level 1 (Ambition)	Minimum 1 GCSE at grade 3 (D), 2 GCSEs at grade 2 (F) and maths and English at grade 1
Intro to Early Years Education	Level 2	Minimum 3 GCSEs at grade 3 (D) including maths and English
The Early Years Educator	Level 3	5 GCSEs at grade 9-4 (A*- C) including maths and/or English
Computing & ICT		
ICT	Level 2	Minimum 1 GCSE at grade 4 and 2 GCSEs at grade 3 (D) including English and maths
Computer Science & Technology	Level 3 Ext Dip	5 GCSEs at grade 9-4 (A*- C) including maths and/or English
Construction, Surveying & Architecture		
Construction, Surveying & Architecture	Level 3 Ext Dip	5 GCSEs at grade 9-4 (A*- C) including maths and/or English
Creative Media Production		
Creative Media Production & Technology	Level 2	Minimum 1 GCSE at grade 4 and 2 GCSEs at grade 3 (D) including English and maths
Creative Media Production	Level 3 Ext Dip	5 GCSEs at grade 9-4 (A*- C) including maths and/or English
Electrical Installation		
Electrical Installation	Level 2	Minimum 2 GCSEs at grade 3 (D) including English and grade 9-4 (A*-C) in maths
Electrical Installation	Level 3	Pass at Level 2 Electrical Installation and a minimum grade 4 in maths
Engineering		
Engineering	Level 2	Minimum 1 GCSE at grade 4 and 2 GCSEs at grade 3 (D) including English and maths
Engineering	Level 3 Ext Dip	5 GCSEs at grade 9-4 (A*- C) including maths and/or English
Forensic & Criminal Investigation		
Forensic & Criminal Investigation	Level 3 Ext Dip	5 GCSEs at grade 9-4 (A*- C) including maths and/or English and GCSE Science grade A*-C (9-4)
Games Design		
Games Design	Level 3 Ext Dip	5 GCSEs at grade 9-4 (A*- C) including maths and/or English

Course	Level	Entry Requirements
Graphic Design & Illustration		
Graphic Design	Level 3 Ext Dip	5 GCSEs at grade 9-4 (A*- C) including maths and/or English
Hairdressing		
Hairdressing & Beauty Therapy	Level 1 (Ambition)	Minimum 1 GCSE at grade 3 (D), 2 GCSEs at grade 2 (F) and maths and English at grade 1
Hairdressing	Level 2	Minimum 1 GCSE at grade 4 and 2 GCSEs at grade 3 (D) including English and maths
Health & Social Care		
Health & Childcare	Level 1 (Ambition)	Minimum 1 GCSE at grade 3 (D), 2 GCSEs at grade 2 (F) and maths and English at grade 1
Health & Social Care	Level 2	Minimum 1 GCSE at grade 4 and 2 GCSEs at grade 3 (D) including English and maths
Health & Social Care	Level 3 Ext Dip	5 GCSEs at grade 9-4 (A*- C) including maths and/or English
Health & Social Care Acorn Pathway		5 GCSEs at grade 9-4 (A*- C) including maths and English & you will also need a second interview with NHS staff
Hospitality & Catering		
Intro to the Hospitality Industry	Level 1	3 GCSEs at grade 3 (E) and English and maths at grade 2
Professional Food & Beverage Service	Level 2	Minimum 1 GCSE at grade 4 and 2 GCSEs at grade 3 (D) including English and maths
Supervision of Food & Beverage Service	Level 3	Pass at Level 2 in related subject and minimum grade 4 in maths and/or English
Motor Vehicle Engineering		
Motor Vehicle Maintenance	Level 1 (Ambition)	Minimum 1 GCSE at grade 3 (D), 2 GCSEs at grade 2 (F) and maths and English at grade 1
Light Vehicle Maintenance	Level 1	3 GCSEs at grade 3 (E) and English and maths at grade 2
Vehicle Maintenance & Repair	Level 2	Full Level 1 Diploma in Vehicle Maintenance and maths and English at grade 3
Vehicle Maintenance & Repair	Level 3	Pass at Level 2 or equivalent and minimum grade 4 in maths and/or English
Painting & Decorating		
Painting & Decorating	Level 1 (Ambition)	Minimum 1 GCSE at grade 3 (D), 2 GCSEs at grade 2 (F) and maths and English at grade 1
Painting & Decorating	Level 2	Minimum 1 GCSE at grade 4 and 2 GCSEs at grade 3 (D) including English and maths
Painting & Decorating	Level 3	Pass at Level 2 in related subject and minimum grade 4 in maths and/or English
Performing Arts		
Performing Arts	Level 2	Minimum 1 GCSE at grade 4 and 2 GCSEs at grade 3 (D) including English and maths
Performing Arts	Level 3 Ext Dip	5 GCSEs at grade 9-4 (A*- C) including maths and/or English
Photography		
Photography	Level 3 Ext Dip	5 GCSEs at grade 9-4 (A*- C) including maths and/or English
Plumbing		
Plumbing	Level 1 (Ambition)	Minimum 1 GCSE at grade 3 (D), 2 GCSEs at grade 2 (F) and maths and English at grade 1
Plumbing	Level 2	Minimum 1 GCSE at grade 4 including Science and 2 GCSEs at grade 3 (D) including English and maths
Professional Cookery		
Professional Cookery	Level 1	3 GCSEs at grade 3 (E) and English and maths at grade 2
Professional Cookery	Level 2	Minimum 1 GCSE at grade 4 and 2 GCSEs at grade 3 (D) including English and maths
Professional Cookery	Level 3	Pass at Level 2 in related subject and minimum grade 4 in maths and/or English
Professional Patisserie & Confectionery	Level 3	Pass at Level 2 in related subject and minimum grade 4 in maths and/or English
Public Services		
Public Services	Level 3 Ext Dip	5 GCSEs at grade 9-4 (A*- C) including maths and/or English
Science		
Applied Science	Level 3 Ext Dip	5 GCSEs at grade 9-4 (A*- C) including maths and/or English and GCSE Science grade A*-C (9-4)
Sport		
Sport	Level 1 (Ambition)	Minimum 1 GCSE at grade 3 (D), 2 GCSEs at grade 2 (F) and maths and English at grade 1
Sport	Level 1	3 GCSEs at grade 3 (E) and English and maths at grade 2
Sports and Activity Leaders	Level 2	Minimum 1 GCSE at grade 4 and 2 GCSEs at grade 3 (D) including English and maths
Travel & Tourism		
Travel & Tourism	Level 2	Minimum 1 GCSE at grade 4 and 2 GCSEs at grade 3 (D) including English and maths
Travel & Tourism	Level 3 Ext Dip	5 GCSEs at grade 9-4 (A*- C) including maths and/or English

Reasons to Choose Southport College

RATED 'GOOD' BY OFSTED IN APRIL 2016

LINKS WITH LOCAL BUSINESSES & INDUSTRY PROFESSIONALS

OPPORTUNITY TO TAKE PART IN WORK EXPERIENCE & WORK-RELATED PROJECTS

FREE TRAVEL PASS*

*TERMS AND CONDITIONS APPLY

REALISTIC WORK ENVIRONMENTS

99% PASS RATE ON LEVEL 3 EXTENDED DIPLOMAS

FRIENDLY STAFF AND TUTORS

FREE LUNCH FOR ELIGIBLE STUDENTS

INDUSTRY EXPERIENCED TUTORS

FANTASTIC FACILITIES

EXCELLENT STUDENT SUPPORT

LEADING PROVIDER OF APPRENTICESHIPS IN THE LOCAL AREA

EASILY ACCESSIBLE TOWN CENTRE LOCATION

GREAT CHOICE OF INTERESTING WORK EXPERIENCE AND PLACEMENTS

EXCITING TRIPS AND VISITS

LOTS OF OPPORTUNITY FOR SPORTS AND ENRICHMENT ACTIVITIES



> OFSTED SAY:

Southport College is a 'good' college.

The College "has continued to provide a consistently good quality of education and training for learners and apprentices."

"Learners and apprentices enjoy their time at college.

The large majority of learners achieve their qualifications and progress to further study, employment or Apprenticeships."

Staff at the College "ensure that learners have access to the most appropriate sources of help and support."

"The vast majority of learners participate in good-quality, meaningful external work experience and work-related activity which helps them prepare for their next steps in education, employment or Apprenticeships."

In March 2019 Ofsted recognised the college's ambition to become outstanding and judged progress in quality to be significant:

"The governing body, the principal and his senior team have a clear ambition and strategy for the college to become outstanding... Senior Leaders have ensured that effective quality improvement strategies are in place, which have had a beneficial effect on learners and apprentices...the proportion of learners who achieved a high grade increased in 2017/18."



> THE PRINCIPAL

Welcome to Southport College. Our aim is to prepare you for your chosen career, and at our easily accessible, town centre location, we offer excellent teaching from industry experienced tutors and individually tailored student support. Our facilities are first-class, our learning environment is safe and secure and I am proud to say that we have a commitment from every member of staff to help our students succeed.

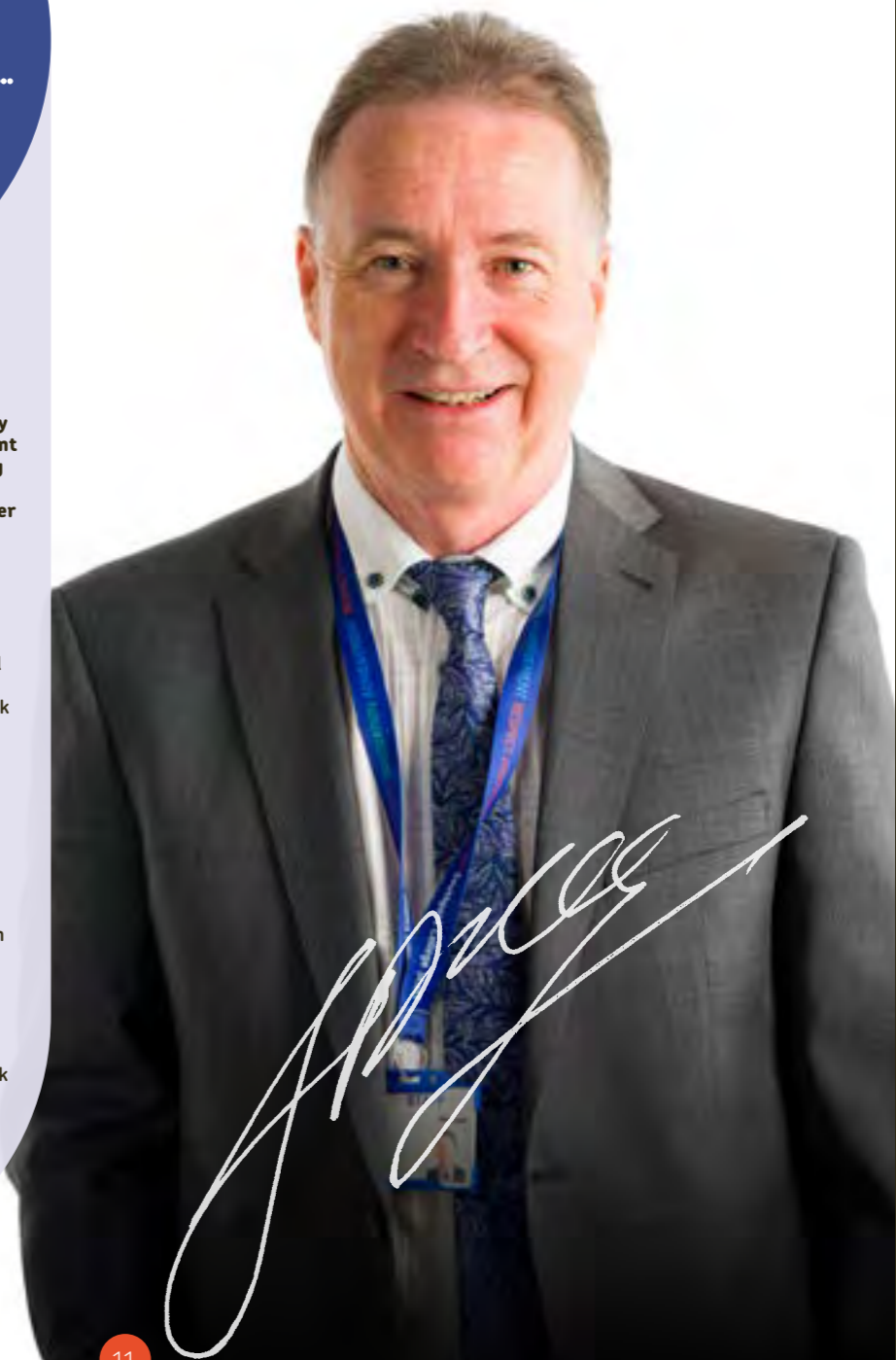
Your future

The majority of our students move into quality employment or go on to university following completion of their studies at Southport College.

To ensure that our students leave us as well-rounded individuals we enhance our courses by providing many additional opportunities including valuable work placements or work experience through our strong industry links; as well as the chance to take part in sports teams or activities, volunteering, trips and special events.

As a 16 year-old the range of options available to you when you leave school can seem overwhelming, so our Student Guidance team is available to contact for careers and course advice should you need it. The best way to get a feel for what life is like at Southport College is to come along to one of our open evenings or taster events and see for yourself. These run throughout the year and are a great way to see how we can help shape your future.

I do hope that this publication inspires you to join the thousands of other students who choose to take their next step with us each year and I very much look forward to welcoming you at Southport College.



VOCATIONAL QUALIFICATIONS



You've probably heard a lot about vocational qualifications. Many people think that A Levels are the only route to a university course but this is not the case. More and more students are opting to study vocational courses over A Levels.

But how are vocational qualifications different?

Prepare for work

Our vocational courses mix theory and practical experience designed to prepare you for work. Most of our courses offer work experience or a work placement as part of the course and you will also benefit from the industry knowledge of guest speakers and local employers.

Some of our students work on live briefs (projects set up by local employers) that give them the experience of working in that job role.



Go to university

Vocational qualifications can get you in to university with BTEC Level 3 Extended Diplomas being equivalent to three A Levels. University websites will tell you what grades you need to do a particular degree course.

Become a specialist

Unlike A Levels where you would study a number of subjects vocational qualifications are designed to give you an in-depth knowledge of one subject area. This will be an advantage when you start your career or head to university as you will already have a detailed understanding of your chosen specialist area. The courses are industry-led which means what you are learning is what you would need to know to work in that sector.

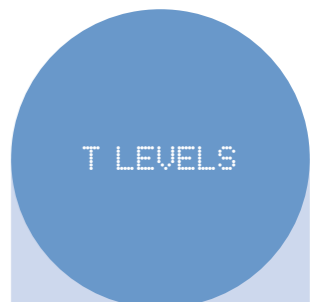


Gain a professional qualification

Many of our courses are industry recognised qualifications which means you will be ready to start your career once you have completed the course. The College has realistic working environments including salons, treatment rooms, a restaurant, kitchens, studios, workshops and a 100+ seat theatre and rehearsal space. All of these learning areas are designed to give you the experience of working in your chosen career and combined with your qualification, set you up for the next step towards your dream job.

Earn while you learn

If you are keen to start your career, for an Apprenticeship could be a good choice and you can study an Apprenticeship from Level 2 all the way up to degree level. We have strong links with employers giving you great opportunities to work for local companies. Apprenticeships are a great way to get experience and achieve a qualification whilst getting paid.



New developments in vocational learning

New 'T Level' technical qualifications, which will sit alongside A Levels and Apprenticeships, are due to be rolled-out in all areas by 2023. These new qualifications, developed in consultation with employers, are designed to prepare students for highly skilled jobs and to ensure students meet the skills needs of the future.

These new technical qualifications have specific features and will offer:

- Increased number of teaching hours
- Extended work placement
- Progression to skilled employment, higher and degree level Apprenticeships or higher technical education including technical degrees
- Specialist training and knowledge leading to a occupational specialism

APPLYING TO SOUTHPORT COLLEGE

We recommend that all applicants attend our open evenings. They offer the perfect opportunity to tour our facilities, speak to students and staff and prepare for joining us as a student in September. Families are welcome too and will be given the opportunity to speak to staff and ask any questions they may have about the course you have chosen, the enrolment process, support needs, travel passes and other important college information.

The quickest and easiest way to apply for a course at Southport College is online at: www.southport.ac.uk



STEP 1

Attend an Open Evening

Tuesday 8 October 2019
5.00pm-8.00pm
Monday 25 November 2019
5.00pm-8.00pm
Tuesday 3 March 2020
5.00pm-8.00pm
Monday 1 June 2020
5.00pm-8.00pm

STEP 4

Formal offer

If you are successful at course discussion you will receive an offer certificate to take home. We will then send you a formal offer letter which fully explains the grades you need to get on to the course. You need to return the slip included in the formal offer letter to confirm your place.

STEP 2

Application

You can apply online or fill in a paper form. Once we receive your application we will store it securely and will arrange a course discussion with you at the College.

STEP 5

Enrolment

GCSE Results Day is on Thursday 20 August 2020
Once you have received your GCSE results you will need to come to Southport College to enrol. You will be contacted with your enrolment date and time in July.

STEP 3

Course Discussion

You will be invited to attend a course discussion to check if the course is right for you. It's also your chance to ask about finance and learning support at the College. You will receive a letter with the time and date of your course discussion along with any special instructions.

STEP 6

Joining us as Student

Your course will begin at the start of September 2020. You will receive information about your start date and timetable when you enrol in August.

KEEP IN TOUCH

If you have any questions during any of these stages then please get in touch. We are here to help you.

Please call our Guidance team on 01704 392704 or email guidance@southport.ac.uk. Make sure you follow us on social media to keep up to date with the latest news, events, competitions and College information.

We look forward to welcoming you as a student at Southport College soon.

FACILITIES AT SOUTHPORT COLLEGE

Our courses are designed to prepare you for work in your chosen sector and our investment in realistic working environments, simulated work spaces, workshops and cutting edge technology are designed to give you the best possible advantage as you make your way in to further study or on to employment.

Why not come along and see the latest developments at one of our Open Evenings:

Tuesday
8 October 2019
5.00pm-8.00pm

Monday
25 November 2019
5.00pm-8.00pm

Tuesday
3 March 2020
5.00pm-8.00pm

Monday
1 June 2020
5.00pm-8.00pm

Workshops

Students on our Bricklaying, Electrical Installation, Engineering, Painting & Decorating and Vehicle Engineering courses all use purpose built workshops using industry standard tools, equipment and products.

Cutting edge technology

Southport College continually invests in new technology, with students benefiting from the use of Mac rooms, a 3D printer and PC labs. Games Design students use the same Hollywood standard computer-generated imagery program as those used to create the graphics in Oscar-winning films such as Pirates of the Caribbean and War for the Planet of the Apes.

Continuing investment

Over the last few years Southport College has invested more than £2 million into modernising and refurbishing areas of the College. Summer 2018 saw the redevelopment of the Creative Media, Games Design and Photography learning areas and most recently our Plumbing and Gas workshops have been completely refurbished creating fantastic state of the art facilities for these students.



Clouds Restaurant

Hospitality & Catering students prepare food and drinks in our training kitchens and bar area which are then served to paying customers in the restaurant.



Concept Salons

Hairdressing, Barbering, Beauty and Nail Services students work with paying clients in our fully operative salons offering a variety of hair, beauty and nail treatments.



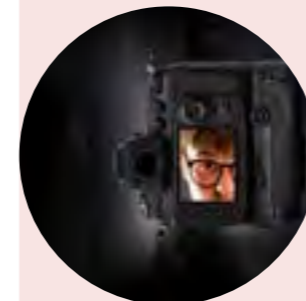
Performing Arts Theatre

Performing Arts students perform in our 100+ seat theatre throughout the year and also make use of the rehearsal rooms, dance studio and recording studio.



Science Labs

Science and Forensic & Criminal Investigations students use our recently expanded science laboratories and specialist equipment.



Photography studio and dark room

Photography students use our extensive bespoke facilities including a darkroom and photography studio.



Nursery

Childcare students work with visiting young children in our nursery room.



Hospital room

Health and Social Care students are able to benefit from working in our hospital ward simulation unit. This great facility gives our students hands on experience of using electronic beds and also includes pregnancy and ageing simulation suits to enable practice of specialist patient care and observation.



Crime Scene Room

Forensic & Criminal Investigations students have access to our specialist crime scene room where they practise their investigation skills.

STUDENT
INFORMATION
CENTRE

Throughout your time with us, you will have access to a wide range of information, advice and guidance. Coming to College might seem like a big leap from being at school, which is why we have a range of support in place to make the change as easy as possible.

The Student Information Centre is a one-stop shop for any information, advice and guidance you may need before and during your time at College. We aim to ensure that you have the support you need to enable you to make the most of your time at College and plan your future.

The Student Information Centre can help you with:

- › Information, advice and guidance about courses
- › Impartial careers guidance and support
- › University information and student loans
- › Financial assistance such as travel passes, help with kits, uniforms and childcare
- › Access to the Safeguarding and Welfare Team
- › Counselling support

Financial Support 16-19 Bursaries

This is a fund intended to assist those students who face the greatest barriers to being in education, e.g. care leavers, young people in care and young people in receipt of Income Support. Students who do not qualify for the full £1,200 may qualify for help from the Bursary Fund with course-related costs, e.g. kit, equipment, uniforms, books.

Travel Passes

The College offers students* who live over 1 mile away from College and study a full-time Further Education course the opportunity to apply for a free travel pass or funds. The passes can be used on either Stagecoach, Arriva or Mersey rail networks.

*Students aged 16-18 who live more than 3 miles away from the College on a full time course will be eligible for travel passes (or funds where necessary). Students who live 1 to 2.9 miles away from the College and are 16-18 are means tested before passes are issued. Students aged 19 and over will be means tested to assess for eligibility before passes or funds are issued. Other terms and conditions apply. Additional information is available on the application form or through contacting the Student Information Centre.

Care to Learn (Childcare support)

Care to Learn provides financial support for young parents. The scheme can pay up to £160 a week towards childcare. You must be aged under 20 on the date you start your course. For further information call 0800 121 8989.

Other funds are available for students aged 19 and over, please visit the Student Information Centre for further information.

Safeguarding and Welfare Support

We recognise our duty of care to students and the wellbeing of our students is paramount at all times. Safeguarding Officers offer support to all learners who may be facing adversity, including those who are Looked After, Young Carers, Teenage Parents or who are under the supervision of the Youth Offending Team. We also work with learners who are in financial crisis and are able to offer financial support via charitable bursaries (subject to eligibility), housing support and access to local foodbanks.

Not sure if College is right for you?
Need help deciding on the right course?
Contact the Student Information team for a 1:1 guidance interview to discuss your options.
Telephone: 01704 392704
Email: guidance@southport-college.ac.uk

Information & Reception

LEARNING
SUPPORT

As a student at Southport College, you will have access to a wide variety of support services. We have a large team of trained staff dedicated to providing you with any additional support you may need.

You can access any of these services by calling the Learning Support Team on 01704 392872, 392866 or 392634.

Support for identified students

- Learning Support Transition Suite (to aid the transition to College)
- Learning support in and out of class
- Support and /or screening by our Specialist Tutoring Team for students with specific learning difficulties (SpLDs) in order to apply for access arrangements e.g. extra time, reader, scribe etc.
- Personal care assistants
- Social/emotional/behavioural support
- Safe 'time-out' space
- Support with communication skills
- Supervision at lunch and break time if needed
- Transition visits

Identified students who disclose a support need are individually interviewed to assess their needs and the level/type of support or tutoring required. We also regularly review all students receiving support to ensure the most appropriate support is in place.

In addition the College has:

A Health and Wellbeing Coordinator who coordinates a service for students identified with a medical need, attends first aid calls and can signpost students to relevant outside agencies.

WE'RE
HERE
TO HELP
AND
SUPPORT
YOU.

Vickie Hayes
Learning Support Manager

STUDENT ENRICHMENT

> ALONGSIDE STUDYING FOR YOUR COURSE, SOUTHPORT COLLEGE OFFERS LOTS OF OPPORTUNITIES TO GET INVOLVED IN DIFFERENT ENRICHMENT ACTIVITIES THROUGHOUT THE YEAR.



STUDENT ENRICHMENT

Get involved!

Alongside studying for your course, Southport College offers lots of opportunities to get involved in different enrichment activities throughout the year, including beach clean ups, cross college committees, raising money for good causes, belonging to the student council, joining our LGBT+ society or even becoming a student governor.

We are currently working towards the Rainbow Flag Award, which recognises our commitment to supporting our LGBT+ community. There is a dedicated LGBT+ student group and College recruits LGBT+ Student Ambassadors each academic year who support Open Events and LGBT+ visibility events across the year. College also hosts 3 parent/carer LGBT+ information evenings each academic year.

Enrichment is about providing opportunities to bring learning to life and broaden your range of interests. It is a good way to make new friends and learn new skills, and it also looks great on your CV or UCAS Personal Statement.



For more information on LGBT events please contact Vickie Hayes on 01704 392872 or email vickie.hayes@southport.ac.uk

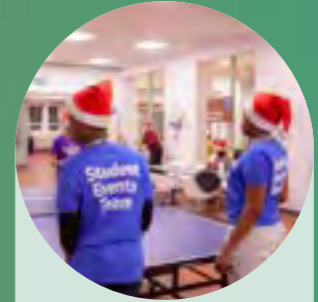


Sport@Southport stay fit and have fun

At Southport College there are a wide range of sport and physical activities on offer for students and staff to take part in. There are weekly sessions in badminton, 5-a-side football, short tennis, dodgeball, basketball, table tennis, yoga, running, walking, benchball and multi-sports, as well as competitions in short tennis, rounders, table tennis and football.

The College also has representative teams in 11-a-side football, volleyball, netball, rugby union and basketball, and these teams compete on a regular basis throughout the year.

Additionally, there is also the fully equipped College gym, which is free to all students and is open throughout the week.



Join the Student Events Team

Each year the marketing team at Southport College recruits friendly, capable students from across the College to join our Student Events Team. The team then work together with our busy marketing department to help deliver a whole range of exciting events on and off the College campus throughout the year. These include open evenings, taster days, school careers fairs, awards events and even our Fresher's Fest.

It's a great way to grow in confidence, develop your organisational or public speaking skills, enhance your CV and of course to make new friends too.

You will receive all the training and support you need and we do our best to make it enjoyable as well as a valuable work experience to impress future employers.



Make a difference with the Student Council

Each year the Student Council recruits a number of individuals who act as representatives for their fellow students. They get involved in a range of projects including organising charity events and working with College management giving their input on important college decisions. Being a part of the Student Council is a great way of making new friends from different courses, as well as building your confidence and developing teamwork skills; all things that look great on your CV or UCAS Personal Statement.

for Teaching and Learning

> WHATEVER YOU ARE PLANNING TO DO IN THE FUTURE, IT IS IMPORTANT YOU HAVE A FIRM GRASP OF ENGLISH LANGUAGE AND MATHS.

ENGLISH & MATHS

Whatever you are planning to do in the future, it is important you have a firm grasp of English language and Maths.

More and more businesses are insisting their employees have GCSE's in both Maths and English at grade 4 or above and it is an essential part of University entry criteria too.

If you don't already have a grade 4 in English and Maths when you arrive at Southport College, we will put a personalised study programme together for you that will fit alongside the course you have chosen, and will help you to achieve these vital qualifications.

>THE SUCCESS OF OUR STUDENTS IS REALLY IMPORTANT TO US HERE AT SOUTHPORT COLLEGE, AND WE LIKE NOTHING MORE THAN AN OPPORTUNITY TO CELEBRATE THIS WITH YOU. FRIENDS AND FAMILY ARE ALWAYS INVITED TO JOIN IN THE CELEBRATIONS TOO AND THEY ARE A FANTASTIC WAY TO MARK THE WONDERFUL ACHIEVEMENTS OF OUR STUDENTS.

Apprenticeship Star Awards

In spring we hold our annual Apprenticeship Star Awards in our beautiful Clouds restaurant. This sparkling occasion is a great opportunity to recognise those outstanding achievers on our Apprenticeship programme.

End of year Awards

In June, we move to the College Theatre for the prestigious end of year awards. Each department has their own event with the shining stars (for a variety of reasons) from each course receiving recognition.

Southport College University Centre Graduation

Then finally in August we have our formal Southport College University Centre Graduation for all of our HE students, held in the opulence of Holy Trinity Church.



AWARD EVENTS



STUDENT DESTINATIONS

Level 3 Extended Diplomas, which are the equivalent of three A Levels, are worth up to 168 UCAS points which can be used to get on to a degree course.

For all of our students the ultimate goal is to get a job in their chosen sector and Southport College students are in demand. Many of our students have taken jobs with prestigious companies, undertaken roles within the armed forces or even set up their own businesses.

UNIVERSITY

Many universities use UCAS points as entry requirements for higher education courses. Universities will set the minimum number of points required for entry on to each course they offer and it means you can work out if you have the right qualifications and grades to apply for your chosen course. A BTEC Level 3 Extended Diploma, equivalent to three A Levels, is worth up to 168 UCAS points. Make sure you check university websites for specific entry requirements if you have a particular course in mind.

Hundreds of our students are now studying for degrees at more than 30 different establishments including:

- > ALRA Drama College
- > Amsterdam University College
- > Bangor University
- > Chester University
- > Edge Hill University
- > Essex University
- > Goldsmiths University
- > Kings College London
- > Leeds Beckett University
- > Leeds College of Art
- > Liverpool Hope University
- > Liverpool John Moores University
- > Manchester Metropolitan University
- > Norwich University of the Arts
- > Nottingham University
- > Sheffield Hallam University
- > Southport College
- > Staffordshire University
- > Swansea University
- > University of Bolton
- > University of Central Lancashire
- > University of Chester
- > University of Exeter
- > University of Gloucestershire
- > University of Liverpool
- > University of Manchester
- > University of Nottingham
- > University of Salford
- > University of South Wales
- > University of The Arts London
- > University of Winchester
- > University of York

Students have gone on to study over 100 Higher Education courses such as:

- > Accounting & Finance
- > Aerospace Engineering
- > Archaeology
- > Architecture
- > Asia Pacific Studies - Japanese
- > Automotive Engineering
- > Biology
- > Biotechnology
- > British Sign Language & Deaf Studies
- > Building Surveying
- > Business Management
- > Child & Adolescent Mental Health
- > Childhood & Youth Studies
- > Civil Engineering
- > Comedy Performance & Production
- > Computer Games Development
- > Computer Science
- > Construction Management
- > Creative Writing
- > Criminal Justice & Forensic Psychology
- > Criminal Psychology
- > Early Years Education with QTS
- > Environmental Conservation
- > Event Management
- > Fashion Photography
- > Film & Television Production
- > Fine Art
- > Forensic Psychology
- > Forensic Science & Criminal Investigation
- > Games Art
- > Games Design
- > Graphic Design
- > Health & Social Care
- > Illustration
- > Information & Interface Design
- > International Hospitality Management
- > Law & Criminal Justice
- > Marine Biology/Oceanography
- > Mechanical Engineering
- > Medical Imaging (Diagnostic Radiography)
- > Midwifery
- > Music Production
- > Nursing (Adult)
- > Nursing (Child)
- > Nursing (Mental Health)
- > Nutrition & Health
- > Operating Department Practice
- > Outdoor Adventure Leadership
- > Paramedic Practice
- > Performing Arts
- > Pharmacy
- > Photo Journalism Documentary
- > Photography
- > Physical Sciences
- > Physiotherapy
- > Podiatry
- > Policing & Criminal Investigation
- > Primary Education with QTS
- > Psychology
- > Psychosocial Analysis of Offending Behaviour
- > Quantity Surveying
- > Social Work
- > Sport & Exercise Science
- > Sports Coaching & Development
- > Sports Therapy
- > Textile Design
- > Veterinary Nursing
- > Working with Children & Families
- > Zoology with Animal Behaviour



EMPLOYMENT/ APPRENTICESHIP

Vocational qualifications are designed to give you the skills you need to do a job and many of our students go straight into employment or an Apprenticeship. This year students have progressed in to a wide range of job roles including:

- > Barber
- > Beauty Therapist
- > Bricklayer
- > Chef
- > Chef de Partie
- > Children's Holiday Rep
- > Commis Chef
- > Early Years Practitioner
- > Education Assistant
- > Electrician
- > Engineer
- > E-Sports Driver
- > Front of House Staff
- > Graphic Designer
- > Hairdresser
- > Healthcare Assistant
- > Heating Engineer
- > Hospitality Assistant
- > Installation Engineer
- > Irish Guards
- > Lifeguard
- > Nail Technician
- > Marketing Assistant
- > Nursery Practitioner
- > Pastry Chef
- > Photographer
- > Playworker
- > Plumbing & Gas Engineer
- > Probation Officer
- > Professional Rugby Player
- > Prop Designer
- > Royal Marine
- > Royal Navy Engineer
- > Special Constable
- > Teaching Assistant



> 100% pass rate on Level 3 Year 2 Extended Diplomas.



> 69% of the students on Level 3 Extended Diplomas obtained at least one distinction.



> Almost 70% of students on Level 3 Extended Diplomas obtained at least 112 UCAS points; the equivalent of BBC at A Level.



> 111 students on Level 3 Extended Diplomas achieved three distinctions or distinction *s (equivalent to three A or A* grades at A Level).

STUDENT SUCCESS



MENDO DESIGN
DESIGN, SIGNS & PRINT

> A CAREER AFTER COLLEGE

Jay Lewis



HND Graphic Design/ Company: Mendo Design/I came to Southport College to study Graphic Design and it was honestly one of the best decisions I have made. The course is a great way to learn and gain experience and you are in very good hands with the tutors! They have so much experience and knowledge of the industry and pass this on to their students but also care about you as an individual and your progress. I learnt so much whilst on the course from the many different processes used in graphic design to dealing with customers and working in the real world. I had a dream to set up my own design/print agency and have recently teamed up with a friend and achieved just that. Mendo Design. I have reached my career goal and Southport College helped me get there!

COOPERHEAT

Cooperheat is a Stork brand

FIRE IT UP

Apprenticeships

> EMPLOYING APPRENTICES AT COOPERHEAT ALLOWS US TO DEVELOP THE SPECIFIC TALENT AND SKILLS THAT ARE REQUIRED FOR CURRENT AND FUTURE RESOURCE PLANS IN ORDER TO DELIVER CONTINUED BUSINESS SUCCESS. IN ADDITION WE RECOGNISE OUR RESPONSIBILITY TO SUPPORT THE DEVELOPMENT OF YOUNG PEOPLE IN OUR REGION'

Ryan Mallinson



Level 4 Engineering Apprenticeship/Previous School: Stanley High School/Following school, I joined Stork's Heat Treatment division Cooperheat and started the Level 2 Apprenticeship programme in partnership with Southport College. I then continued onto an Advanced Apprenticeship which allowed me to specialise further in Engineering Design and Computer Aided Design. This enabled me to progress to the HNC in Engineering during which I was promoted to the role of Design Engineer, within Cooperheat. I am now studying a HND which will allow me to become a more competent Design Engineer and take on specialist projects. I was proud to be awarded Stork's REACH Beyond Zero Award for HSEQ Improvement which celebrates excellence in Health, Safety, Environment and Quality. I am really grateful for the opportunities and support that I have received from my employer and lecturers at Southport College. I would highly recommend the Apprenticeship programme as a route to a successful career in Engineering.

> AS TECHNOLOGY MOVES EVER FORWARD AND COMPETITION BECOMES STRONGER, WE NEED HIGHLY SKILLED ENGINEERS WITH A HIGHER EDUCATION TO TAKE US FORWARD AND MEET THE CHALLENGE HEAD ON.

Alan Andrews | Lattimer Engineering

INDUSTRY LINKS

Southport College works with many large and small employers. Through these valuable links we can offer students Apprenticeships, higher education courses, creative 'live' briefs, guest speakers, work placements, progression opportunities and much more...

Here are just some of the businesses we have links with:

- Army
- Bliss Hotel Southport
- Bijou Cinema Southport
- Blackpool Pleasure Beach
- CAE Technology Systems
- Clynol
- Cooperheat
- Declor
- Dovehaven Care Homes
- Dulux Paints
- Edge Hill University
- Farmageddon
- Fletchers Solicitors
- Formby Hall Golf Resort & Spa
- Graham & Brown
- Hamilton Acorn
- Hogg Robinson UK
- Ilford & Harman Technology
- Jason James Salon
- J.A.R.E Airline Training Partnership
- L'Oreal
- Lattimers
- Liverpool Women's NHS Foundation
- Mac
- Monkey Puzzle Day Nursery
- RAF
- Royal Academy Arts
- Samaritans UK
- Sound City Liverpool
- Southport & Ormskirk Hospital NHS Trust
- Southport Flower Show
- The Atkinson
- The Vincent
- UCLan
- University of Cumbria

L'ORÉAL



THE VINCENT



GRAHAM & BROWN

THE ATKINSON

Southport & Ormskirk Hospital NHS Trust

BLISS HOTEL SOUTHPORT

FLETCHERS SOLICITORS



Dovehaven Care Homes



LATTIMER

COOPERHEAT

TRAINEESHIPS

What is the Traineeship Programme?

Southport College is seeking to assist unemployed young people aged 16-24 to secure employment by providing them with meaningful opportunities to develop transferable skills.

How does a Traineeship work?

The Traineeship programme is designed to assist young unemployed people gain transferable skills. Traineeships are an opportunity to gain real work experience and job skills and to improve English and maths, if needed. It gives young people the skills and experience that employers are looking for, helping to boost confidence and career prospects with an Apprenticeship, Further Education or employment. To be eligible for this course you will need to be aged 16-24 and not in education, employment or training.

To find out if a Traineeship is for you or to view our latest Traineeship vacancies visit the Traineeships page on our website www.southport.ac.uk.

The Programme

Our programme, has an average duration of 12 weeks and is tailored to your individual needs.

You will cover a number of subjects including:

- English and maths (if required)
- Employability skills
- Progress

Placement

You will also undertake a placement of 3 days per week, which will be matched to your areas of interest and aspiration, where you will undertake high quality work experience rather than observation or mundane tasks. You will be well prepared for your placement during your sessions at College.

Feedback & review

You will also receive regular constructive feedback from managers and formal reviews will take place at key stages with you, your placement manager and Southport College.

At the end of the course you can progress to:

- Apprenticeship
- Employment
- Higher level course at Southport College

If you are interested in a Traineeship you can register by speaking to our Student Guidance team on 01704 392704 or email: traineeships@southport.ac.uk

A Disclosure & Barring Service (DBS) check may be required for certain placements.

Traineeship Programme Project
Southport College

Employment 

Apprenticeships 

Education 

Traineeships



Jade Letford



The traineeship programme at Southport College allowed me to gain confidence in myself. The programme also taught me that if you focus on the bigger picture of what you want to achieve and put in the work, then anything is possible. Never in my wildest dreams did I think that someone like myself, with no previous experience, would be working in one of the best solicitors within the country and one of the Times 100 Best Companies to work for. The Traineeship/Apprenticeship gave me that opportunity and without them I don't think this would have been possible. Whilst on the course I was given the opportunity to learn the important key skills that are required in the working environment. I was also given the support and guidance throughout the course, which is leading me on the pathway towards a career in law. Once I'd finished the traineeship I went onto complete an Apprenticeship. I then re-applied for a job within Fletchers and I had a successful interview and got the job.

APPRENTICESHIPS

What is an Apprenticeship?

An Apprenticeship is a job with training and an alternative route into skilled employment. Apprenticeships are designed in partnership with employers to ensure employees gain the skill they need to job their well.

Apprenticeships are offered in over 1500 occupations and available to people over the age of 16.

- Earning a salary
- Gaining relevant work experience
- Learning job-specific skills
- Receiving training
- Getting paid holidays

**How does an Apprenticeship work?**

Apprentices work alongside experienced staff to gain knowledge, experience and ultimately a qualification in the area they wish to pursue a career in.

Apprentices can be paid the National Minimum Apprenticeship wage or the national Minimum Wage according to age but some apprentices earn significantly more.

As part of the structured programme, apprentices work towards qualifications by studying technical skills and carrying out practical assessments.

Depending on your employer and their type of business you may receive training on a day-release basis, where you would attend college one day a week.

However for some apprenticeships, all training is delivered in the work place.

Can I do an Apprenticeship?

Apprenticeships can be challenging as you will be working for an employer and training for your job role at the same time. Our checklist below will tell you if an Apprenticeship could be the route for you:

- > You must be over the age of 16 and have completed your GCSEs
- > You must find a job in your chosen sector and have an interest in progressing in that job role
- > Your employer must be willing to offer you an Apprenticeship
- > You will need a good work ethic, excellent timekeeping and a professional approach
- > You must have a minimum Grade 4 in GCSE English and maths or a willingness to improve your English and maths skills.

How do I get an Apprenticeship?

There are many ways you could find a suitable Apprenticeship. We recommend trying more than one way to find an Apprenticeship. Please see below the recommended ways:

Look for vacancies

- > Register with the National Apprenticeships Services www.gov.uk/apply-apprenticeship and view their current vacancies. If you are interested in any of the advertised vacancies you can apply through their website. You can also view the Apprenticeship vacancies on the Southport College website. These are the vacancies where Southport College will deliver the training for those employers.

Approach employers

- > You can find your own Apprenticeship by approaching businesses with your CV and a Covering Letter. Remember to choose businesses that you are interested in working for.

Join our talent pool

- > Once you've finished your GCSEs you can join the talent pool at Southport College. We may be able to match you with an Apprenticeship and an employer that suits you. To join our talent pool send your CV and covering letter to employer@southport.ac.uk

For more information about Apprenticeships at Southport College visit www.southport.ac.uk, email guidance@southport.ac.uk or call 01704 392704.

> AS AN APPRENTICE YOU WILL EARN RECOGNISED QUALIFICATIONS ALONG WITH GAINING INDEPENDENCE AND RESPECT. YOU WILL SIGNIFICANTLY ENHANCE YOUR EMPLOYABILITY WHILST DEVELOPING YOUR SKILLS. IT IS IMPORTANT TO REMEMBER THAT AN APPRENTICESHIP CONSISTS OF TWO KEY ELEMENTS - EMPLOYMENT AND EDUCATION, BOTH ARE EQUALLY IMPORTANT AND RUN ALONGSIDE EACH OTHER.



Kate Wilkinson

AAT Level 2 Apprenticeship/Previous School: Bishop Rawstorne Church of England Academy/I chose to do an apprenticeship as I was interested in earning money while learning. It allows me to earn whilst developing my skills and knowledge both practically in the work place and academically at college. Doing an apprenticeship has supported me towards my chosen career because I feel that I have gained more practical experience than I would have done had I gone to university. The AAT course also provides you with a good understanding of manual accounting which is important if software ever lets you down! I hope to become a chartered accountant in the future so will continue at Southport College over the next couple of years studying AAT Level 3 and 4.

FIND YOUR LEVEL

The courses at Southport College are designed to get you where you want to be. They are available at different levels so you study at a level to suit your ability. Our courses are vocational which means you put the theory you learn into practice. This means that when you finish the course you have learned skills that businesses want, as well as studied the theory.

WHETHER YOU ARE LOOKING TO STUDY A DEGREE AT UNIVERSITY OR PERHAPS GET THE SKILLS TO LOOK FOR WORK OR START AN APPRENTICESHIP, WE'VE GOT A COURSE JUST FOR YOU.

ENTRY LEVEL

Connect (Entry Level)

Our Connect course is for learners who are working towards Entry Level 2. The course is tailored to a student's individual needs and focuses on the transition to College from school as well as preparation for their next step. It consists of two 1-year courses dependent on the ability/achievements of students. The course is designed to give students the confidence and skills to progress on to one of our vocational courses, work experience through a supported internship or move towards independent living.

Aspire (Entry Level 3)

This is a one-year course designed to help students to prepare for their next step on the career ladder. Students learn employability and independent learning skills and during the course try out tasters in a number of different subjects around College to help them to choose what they would like to progress to next.

LEVEL 1

Ambition (Level 1 Pathways)

Our Level 1 pathway allows you to study in your chosen vocational area whilst further developing your English, maths and employability skills. There are eight Level 1 Ambition pathways, the courses take one year to complete and are an introduction to the subject you have chosen to study. When you have finished the course you may be ready for Level 2, full-time work or an Apprenticeship.

Next Step (Level 1)

This 16 week course is for students who have been out of education and combines enrichment activities and employability skills as well as providing academic support and improving students' confidence and life skills. The course is designed to give students the skills and abilities to progress on to one of our vocational courses.

Level 1 Bricklaying, Hospitality & Catering, Professional Cookery, Motor Vehicle

These courses take one year to complete and are an introduction to the subject you have chosen to study. When you have finished the course you will be ready for Level 2, full-time work or an Apprenticeship. Entry requirements for this level vary from course to course; please see the individual course listings.

LEVEL 2

Level 2

One-year courses that cover more of the subject than a Level 1 course. You will study your chosen subject in detail as well as put the theory into practice. After you have completed the course you will have the option of progressing to Level 3, looking for full-time work or perhaps starting an Apprenticeship. Entry requirements for this level vary from course to course; please see the individual course listings.

LEVEL 3

Level 3

These vocational qualifications take one or two years to complete depending on your chosen subject. Once you have completed your course you can progress into employment or onto an Advanced or Higher Apprenticeship. Some Level 3 courses may also give you enough UCAS points to progress to Higher Education. To study a skills-based course at Level 3 you will need a Level 2 qualification in a vocationally related area.

Level 3 Extended Diploma

The highest level of course you can study with us straight after your GCSEs; these are the vocational equivalent of A Levels. They take two years to complete and give you the UCAS points to apply to university; they can be worth the equivalent of three A* grades at A-Level. They also give you the experience that businesses want so you can apply for a job or an Apprenticeship. To study for an Extended Diploma you will need a minimum of 5 GCSEs at grade 9-4 (A*-C) including Maths and/or English at grade 4 or equivalent.

HIGHER EDUCATION

Higher Education

We also offer a range of higher education courses including HNCs, HNDs, Foundation Degrees and Top-Up Degrees. To find out more and to request your free copy of the HE Prospectus please call 01704 392704.

Some courses may have subject-specific entry requirements. Please see the relevant course pages for these.



42
BRICKLAYING



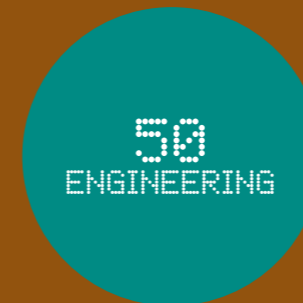
44
BUILDING
SERVICES
ENGINEERING



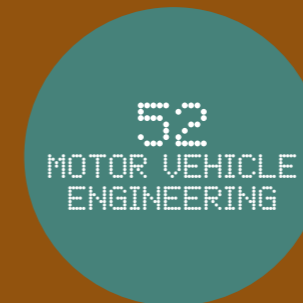
46
CONSTRUCTION
SURVEYING &
ARCHITECTURE



48
ELECTRICAL
INSTALLATION



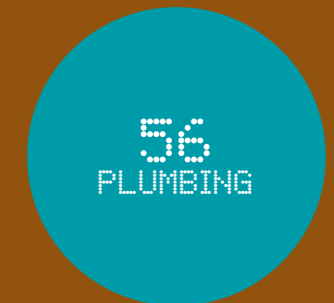
50
ENGINEERING



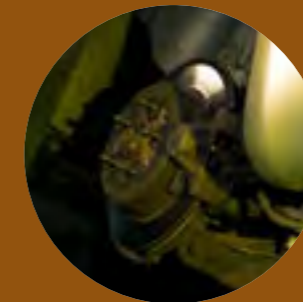
52
MOTOR VEHICLE
ENGINEERING



54
PAINTING &
DECORATING



56
PLUMBING



BRICKLAYING

Where would we be today without bricklayers?

Most of the large structures that we see around us are thanks to the skilled people who put designs into effect. They take an architect's vision and make it a reality.

Within the Liverpool City Region the demand for new homes and work places has significantly increased and as a result there is currently a shortage of qualified bricklayers. Therefore there has never been a better time to train in this much in demand sector.

Choosing bricklaying at Southport College will not only prepare you for a great career with lots of job prospects but it will also enable you to be involved in really helping to shape the region in which you live.

Why choose Southport College?

- > The construction department have strong links with Sefton Council planning department, M&P Surveying and Turner Construction meaning our students may have the opportunity to undertake work placements throughout the course as well as opportunities to work on projects for real businesses
- > Industry-standard tools and equipment are used throughout the department and all of our tutors are industry-experienced tradesmen and pass on their skills and knowledge to the students.

What will I study?

- > Basic cavity walling
- > Solid walling
- > Decorative brickwork
- > Complex masonry structures
- > Setting out buildings
- > Principles of Construction
- > Health & Safety principles

Careers after the course

- > Bricklayer: £16,000-£23,000
- > Experienced bricklayers can earn up to £50,000
- > Paving and block paving: £14,000-£22,000

LEVEL 1

Bricklaying Level 1

One year

Entry requirements Three GCSEs at grade 2 (E) and English or maths at grade 2.

Progression Level 2 course in Bricklaying

LEVEL 2

Bricklaying Level 2

One year

Entry requirements Minimum Three GCSEs at grade 3 (D), including English and/or maths grade 2 or Level 1 Diploma in a related subject.

Assessment This course contains some externally assessed units.

Progression Employment or Level 3 Bricklaying or Extended Diploma in Construction, Surveying and Architecture.

LEVEL 3

Bricklaying Level 3

One year

Equivalent to A Levels

Entry requirements Pass at Level 2 or equivalent in related subject and a minimum grade 4 in English and maths or equivalent.

Progression Employment

Every applicant will need to be interviewed for their chosen course and may need to provide a reference.

> BRICKLAYING IS NOT JUST ABOUT BUILDING, IT ALSO INVOLVES CREATING AND READING PLANS AND BASIC ARCHITECTURE.

Matthew Gregson

...

Bricklaying Level 2/ Previous School: Meols Cop High School/ I chose to come to Southport College as it is close to home and offered the perfect course for me. I had also attended a taster day here when I was in school and really enjoyed the day.

I have really enjoyed the practical lessons on the Bricklaying course. I like being in the workshop putting the skills I've learnt into practice; although I don't mind the theory lessons either!

The tutors are helpful, kind and really knowledgeable. They have all worked in the industry and pass on their invaluable knowledge to the students.

I am staying at Southport College next year to complete a Level 2 Apprenticeship in Trowel Occupations with the plan in the future to hopefully have my own building company.

BUILDING
SERVICES
ENGINEERING

This course is an introduction to the various trades that exist within building services sector giving you a sound overview of your choice of career. If you are thinking of starting a career as a plumber, electrician or gas fitter the course provides an excellent platform to start from.

The Building Services Engineering course is a one-year introductory qualification covering four areas of building services engineering: plumbing, electrotechnical, heating/ventilating, refrigeration and air conditioning.

Why choose Southport College?

- > All of our tutors are industry experienced working as successful tradespeople for a number of years.
- > The College has excellent facilities with specially designed workshops where students can work independently or as part of a team and we ensure students are kept up-to-date with the latest industry developments.
- > We have strong links with local employers and offer Apprenticeships in Plumbing & Heating and Electrical Installation.

What will I study?**You will cover four areas of building services engineering:**

- > Plumbing
- > Electrotechnical
- > Heating and ventilating
- > Refrigeration and air conditioning

You will also study:

- > Safe working practices
- > Environmental protection
- > The science of building services
- > Renewable energy and the conservation of fuel and power

Careers after the course

This course prepares you to start other qualifications and will give you a head start in other Level 2 courses including:

- > Plumbing
- > Electrical installation
- > Gas
- > Heating & Ventilation

LEVEL 2

Access to Building Services Engineering Level 2

Entry requirements Minimum one GCSE at grade 4 and two GCSEs at grade 3 (D), including English and maths or Level 1 Diploma in a related subject.

Progression Minimum one GCSE at grade 4 and two GCSEs at grade 3 (D), including English and maths or Level 1 Diploma in a related subject.

Every applicant will need to be interviewed for their chosen course and may need to provide a reference.

> THIS COURSE IS AN INTRODUCTION TO THE VARIOUS TRADES THAT EXIST WITHIN BUILDING SERVICES SECTOR GIVING YOU A SOUND OVERVIEW OF YOUR CHOICE OF CAREER.



Mollie
Portnall

...

Building Services Engineering Level 2/Previous School: Greenbank High School/I chose the BSE course at Southport College as it's hands on and practical; I didn't want to be sat in a classroom all day! The course gives you lots of knowledge about the different areas of the industry, electrical, gas and plumbing, meaning you have lots of progression opportunities once you've finished. I am doing a Level 2 Apprenticeship with EFT next year with the hope to continue working with them in the electrical systems department in the future. I have really enjoyed the practical lessons, especially when we have made something such as copper and steel frames.

CONSTRUCTION SURVEYING & ARCHITECTURE

Ever looked up at the buildings around you and thought, wow that's pretty impressive? Well these buildings are an immense collaboration between the designers or architects, surveyors and the builders who physically put a structure together.

Did you know that people trained in architecture and surveying are some of the most sought after in the Liverpool City Region and these areas have recently been identified as having a skills shortage locally?

That means there's never been a better time to train in Construction, Surveying and Architecture as there are so many job opportunities to be grasped.

We as a college are proud to offer this course and focused on delivering an education that will shape the future of our local region and the built environment sector. You could contribute to the improvement of not only building technologies but also people's lives as a whole.

Why choose Southport College?

- > The construction department have strong links with Sefton Council planning department, M&P Surveying and Turner Construction meaning our students may have opportunities to work on projects for real businesses as well as the opportunity to take place in work placements throughout the course.
- > Industry-standard tools and equipment including realistic CAD suite and computer rooms are used throughout the department and all of our tutors are Industry-experienced tradesmen and pass on their skills and knowledge to the students.

What will I study?

- > Surveying
- > Civil engineering
- > Project management
- > CAD
- > Highway construction & maintenance
- > Sustainable construction

Careers after the course

- > Architect: £19,000-£43,000
- > Civil Engineering: £14,000-£35,000
- > Construction Project Manager: £27,000-£45,000
- > Quantity Surveyor: £20,000-£45,000
- > Site Manager: £27,000-£45,000

LEVEL 3

Construction, Surveying and Architecture Level 3 Extended Diploma

**Two years
Equivalent to three A Levels
(up to 168 UCAS points)**

Entry requirements Five GCSEs at grade 9-4 (A*-C) including English and/or maths or pass/merit in a related Level 2 Extended Certificate and English and maths at Level 2.

Progression University or employment.

Every applicant will need to be interviewed for their chosen course and may need to provide a reference.

> EMPLOYMENT IN CONSTRUCTION IS SET TO INCREASE AND THERE ARE MANY SPECIALIST ROLES TO CHOOSE FROM INCLUDING BRICKLAYERS AND BUILDING SURVEYORS.

Grace Webb

...

Construction, Surveying and Architecture Level 3 Extended Diploma/ Previous School: Maricourt RC High School/

I want to be an architect in the future so this course was perfect for me. I think the BTEC is a much better route into this type of career as it focuses on the industry much more and allows you to gain practical skills as well as knowledge. I have particularly enjoyed the opportunities we have had to go out to building sites to gain experience of what it is like out in the industry.

I chose Southport College as it was the best college I visited with the great facilities. I travel quite far to get here using my free travel pass, but it is definitely worth it.

I am going to the University of Liverpool to study Architecture next year and I feel like my time here at Southport College has prepared me well. I know so much more about the whole construction industry now which will help massively in my future career as an architect.

ELECTRICAL
INSTALLATION

The electrotechnical industry is responsible for electrical installation in all types of buildings including data-cabling and fibre optics. Electrical installation is at the forefront of improving the energy efficiency of the UK's homes and businesses. It is also developing new technologies to meet the demand for renewable energy systems. Our courses provide you with the regulation knowledge, practical skills and the science required for electrical installation work, combining workshop sessions with theory lessons.

Why choose Southport College?

- > Our courses are recognised in the electrical installation industry and students have the opportunity to become fully qualified as an approved electrician through the Competent Persons Scheme (CPS).
- > Our purpose-built workshops are equipped with the latest equipment to prepare students for working in the industry and students are regularly kept up to date with the latest industry developments.
- > The electrical installation department have strong industry links with Fluke, Brightsparks, Cooperheat, Screwfix, Denmans, Hager, Interserve and NICEIC.

What will I study?

- > Basic installation
- > Electrical principles
- > Electrotechnology
- > Inspection testing and commissioning
- > Fault diagnosis and repair
- > Circuit design

Careers after the course

- > Many qualified electricians set up their own businesses and experienced workers can earn upwards of £35,000.

LEVEL 2

Electrical Installation Level 2**One year**

Entry requirements Minimum four GCSEs at grade 3 or above including English at grade 3 and maths at grade 4 or Level 1 qualification in a related subject.

Progression Level 3 Electrical Installation or Higher Apprenticeship

LEVEL 3

Electrical Installation Level 3**Equivalent to A Levels****One year**

Entry requirements Pass at Level 2 Electrical Installation and a minimum grade 4 in maths or equivalent.

Progression Employment, Advanced Apprenticeship, HND, Foundation Degree or further study such as 18th Edition.

Every applicant will need to be interviewed for their chosen course and may need to provide a reference.

> OUR COURSES PROVIDE YOU WITH THE REGULATION KNOWLEDGE, PRACTICAL SKILLS AND THE SCIENCE REQUIRED FOR ELECTRICAL INSTALLATION WORK, COMBINING WORKSHOP SESSIONS WITH THEORY LESSONS.

Borys
Ryan

Electrical Installation Level 2/Previous School: King George V/I have really enjoyed studying at Southport College. I wanted to get the practical hands on experience in electrical installation and this course was perfect! I have loved the practical learning as well as the positive atmosphere around the college. The staff are great; very cheerful and encouraging and the facilities in the electrical department are really good too. The individual learning spaces for each student are a good size and have really helped me to learn a lot about the trade. Next year I plan to either start an electrical installation Apprenticeship or continue studying here on the Level 3 Electrical Installation course. Doing this course has confirmed that I definitely want to become an electrician in the future!

ENGINEERING

The role of the engineer is to problem solve. Their fields of expertise range from engineering systems at the molecular level (nanotechnology) to the construction of the world's largest structures. The list of engineering disciplines includes electrical, electronic, mechanical, aeronautical, civil, control and automotive and nearly 20% of the UK workforce consists of Engineers. Engineering students have numerous career options to choose from. At Southport College, our courses focus on mechanical and electronic engineering. Typically, you could be in a CAD (Computer Aided Design) suite planning your designs one day and manufacturing your designs in the fully equipped workshop.

Why choose Southport College?

> Our Engineering department has benefited from a £1.3 million refurbishment project providing students with a new, modern e-learning classroom and an extended/refurbished workshop housing £150,000 of new equipment.

> All of our tutors are industry-experienced engineers who pass on their wealth of skills and knowledge to students using industry-standard machines and equipment. A variety of teaching methods and resources are used in both the workshops and the classrooms to help students prepare for work in the industry.

> The department have strong links with Cooperheat, Lattimer Engineering and UBH International Ltd.

In order to experience a real working environment, students will visit:

- > BAE Systems Salmesbury (aeronautics)
- > BAE Systems Barrow-in-Furness (nuclear submarines)
- > Leyland Trucks

Other enrichment activities include:

- > Go-Karting in Burscough
- > Museum of Science and Industry, Manchester
- > West Lancashire Steam Railway

What will I study?

- > Auto CAD
- > Designing and testing electronic circuits
- > Electronic design
- > Fabrication
- > Traditional conventional machining
- > Maths

Careers after the course

- > Aerospace Engineer: £20,000-£40,000
- > Electronic Engineer: £21,000-£55,000
- > Mechanical Engineer: £22,000-£50,000
- > Welder: £16,000-£33,000

LEVEL 2**Engineering Level 2****One year**

Entry requirements Minimum one GCSE at grade 4 and two GCSEs at grade 3 (D) including English and maths or Level 1 qualification in a related subject and Level 1 Functional Skills.

Progression Level 3 Engineering, Level 2 Electrical Installation, Level 2 Vehicle Engineering or employment/Advanced Apprenticeship.

LEVEL 3**Engineering Level 3 Extended Diploma Equivalent to three A Levels (up to 168 UCAS points)****2 years**

Entry requirements Five GCSEs at grade 9-4 (A*- C) including maths or Pass in a related Level 2 Extended Certificate and English and maths at Level 2.

Assessment This course contains some externally assessed units.

Progression Employment, Higher Apprenticeship or degree on a university course such as HNC Engineering at Southport College.

Every applicant will need to be interviewed for their chosen course and may need to provide a reference.

> TYPICALLY, YOU COULD BE IN A CAD (COMPUTER AIDED DESIGN) SUITE PLANNING YOUR DESIGNS ONE DAY AND MANUFACTURING YOUR DESIGNS IN THE FULLY EQUIPPED WORKSHOP.

Luke Frackelton

...

Engineering Level 3 Extended Diploma/Previous School: Range High School/ I visited an Open Evening at Southport College and decided it was the college for me. I wanted to do a BTEC in Engineering and the course here is perfect! I am a very practical learner so the practical side of the course has been really enjoyable and has helped me to solidify my learning. The staff are always happy and helpful and the facilities are the best around! This a great college offering some great opportunities for Engineering students. I am very happy that I chose to come here. I have been offered a place at Liverpool John Moores University next year to study Mechanical Engineering.

MOTOR VEHICLE ENGINEERING

Motor Vehicle Engineers and Technicians work on the maintenance and repair of all aspects of motor vehicles.

They perform preventative and restorative work on systems relating to the engine, transmission, electrical, braking, steering and suspension. They also carry out routine servicing, inspections, and when qualified the annual MOT testing of vehicles, advising customers on their condition, any faults found and repair options.

They also need to have good transferable engineering type skills that enable them to repair broken parts and to problem solve when removing and replacing old, rusty and worn out components.

The UK automotive aftermarket is thriving, contributing £12.2 billion each year to the economy, supporting 345,600 jobs and servicing more than 30 million vehicles each year. Our courses are designed to give you the skills and knowledge to gain employment within this expanding sector.

Why choose Southport College?

- > Our Motor Vehicle department has benefited from a full refurbishment of the two fully equipped on-site garages, MOT stations and tyre fitting bays.
- > Students have the opportunity to work on up to 10 vehicles in the workshops using industry standard equipment preparing them for real work environments.
- > Our tutors all have industry experience, having worked in the motor vehicle trade for a number of years, passing on invaluable knowledge to students.
- > Students have access to the Autodata vehicle information system.

What will I study?

A wide range of Motor Vehicle related subject areas including

- > Health & Safety in the workplace
- > Working with others
- > Engineering and fabrication techniques
- > Vehicle systems
- > Engine units and components
- > Transmission and driveline components
- > Basic servicing and valeting
- > Lubrication and cooling systems
- > Fuel and air systems
- > Ignition systems
- > Replacing engine chassis units
- > Vehicle inspections
- > Fault diagnosis

Careers after the course

- > Automotive Engineer: £20,000-£50,000
- > Breakdown Engineer: £13,000-£30,000
- > Vehicle Mechanic: £19,000-£32,500
- > Car Sales Executive: £15,000-£35,000
- > Parts and Vehicle Service Reception: £16,000- £20,000

LEVEL 1

Motor Vehicle Maintenance Level 1 (Ambition)

One year

Entry requirements Minimum one GCSE at grade 3 (E), two GCSEs at grade 2 (F) and maths and English at grade 1.

Progression Full Level 1 course in Light Vehicle Maintenance.

Light Vehicle Maintenance Level 1

One year

Entry requirements Three GCSEs at grade 3 (E) and English and maths at grade 2 or equivalent.

Progression Level 2 course in Vehicle Maintenance & Repair.

LEVEL 2

Vehicle Maintenance & Repair Level 2

One year

Entry requirements Full Level 1 Diploma in Vehicle Maintenance & Repair and maths and English at grade 3 (D).

Progression Level 3 course in Vehicle Maintenance & Repair or Apprenticeship.

LEVEL 3

Vehicle Maintenance & Repair Level 3

One year

Equivalent to A Levels

Entry requirements Pass at Level 2 or equivalent in related subject and a minimum grade 4 in maths and/or English or equivalent.

Progression Employment or university

Every applicant will need to be interviewed for their chosen course and may need to provide a reference.

Scott
McCowen

...

Motor Vehicle Level 1/Previous School: Stanley High School /I chose Southport College as it is close to home and offered the course that I wanted to do. I have always been interested in vehicles and how they work and have always been fascinated by cars. The staff at college are fantastic and are really easy to get along with. The workshop is amazing too; I can't think of anything that could be done to make it better! You learn so much on the course; I've only been here for a year and have learnt so much already. I am coming back to college next year to study Motor Vehicle Level 2. I want to build upon the knowledge I have learnt in my first year to make me the best I can be in the industry.

PAINTING & DECORATING

Although painting and decorating does include small-scale projects like house refurbishments, it is not limited to this. Oil rigs, bridges and steelwork all require protective coatings and hotels, bars, restaurants and stately homes all demand the ultimate decorating finesse. Demand for high-quality and qualified painting and decorating tradespeople is always going to exist and with TV and media coverage of the trade in shows such as 60 Minute Makeover and DIY SOS, the industry has seen an extra boost in jobs and projects.

Why choose Southport College?

- > The College benefits from excellent facilities with a custom-built painting and decorating workshop.
- > Our tutors are all industry-experienced tradesmen with years' experience in the painting and decorating industry and students have access to the latest products and industry-standard equipment.
- > The department has strong links with local and global businesses such as Hamilton Acorn, Dulux and Graham & Brown with Hamilton Acorn sponsoring our nationally recognised Student of the Year award.

What will I study?

- > Health, Safety and welfare in construction
- > Erecting and dismantling access equipment and working platforms
- > Preparation of surfaces
- > Applying paint by brush and roller
- > Applying standard papers to walls and ceilings
- > Specialist decorative finishes

Careers after the course

- > Painter and Decorator: (domestic or industrial) £16,000-£27,000
- > Industrial Sprayer: £19,000-£30,000
- > Interior Designer: £18,000-£40,000
- > Freelance Painter/Decorators can earn about £140 a day

LEVEL 1**Ambition Painting and Decorating****Level 1****One year**

Entry requirements Minimum one GCSE at grade 3 (E), two GCSEs at grade 2 (F) and maths and English at grade 1 or completion of the Aspire course at Entry Level 3 and English and maths at grade 1.

Progression Level 2 related course

LEVEL 2**Painting and Decorating Level 2****One year**

Entry requirements Minimum one GCSE at grade 4 and two GCSEs at grade 3 (D) including English and maths or Level 1 qualification in a related subject.

Progression Employment

Every applicant will need to be interviewed for their chosen course and may need to provide a reference.

> DEMAND FOR HIGH-QUALITY AND QUALIFIED PAINTING AND DECORATING TRADESPEOPLE IS ALWAYS GOING TO EXIST.

Adam
Murdoch
...

Painting and Decorating Level 2/Previous School: Ormskirk School/I came to an Open Evening at Southport College and really liked it. It was better than some of the other colleges I had looked at and getting a free bus pass was a big selling point! The Painting and Decorating course has been great. The tutors are really nice and approachable and the facilities are great. They have everything you need to complete the course. The tutors also helped me to get together equipment to set up my own decorating business. I have already started my own business and hope to continue to grow this and become a successful sole trader. I have learnt everything I need to become a successful decorator. I've got the qualifications. Also the tutors have all worked in the industry and they are able to pass on all their skills and knowledge.

PLUMBING

Plumbers fit and service hot and cold water systems, heating systems and drainage networks. Many plumbers are self-employed running their own businesses, others may work for large plumbing or construction companies.

Our courses are intended for those wanting to gain the skills and knowledge necessary to enter the plumbing industry. You could further develop your skills with additional training in areas such as heating, ventilation and air-conditioning, and renewable energy technologies like solar powered heating.

Why choose Southport College?

- > The College has excellent facilities with specially designed workshops where students can work independently or as part of a team
- > All of our tutors are industry experienced having worked as successful tradesmen for a number of years and they keep students updated on the latest industry developments.
- > Student projects and assignments are based on realistic working environments preparing them well for the world of work.
- > The department works with several local and national plumbing and heating companies.

What will I study?

- > Installation, repair and maintenance
- > Above ground drainage
- > Plumbing science
- > Pipework
- > Renewable energy
- > Fabrication techniques
- > Hot and cold water systems
- > Rain water systems
- > Central heating systems
- > Electrical Installation
- > Health & Safety
- > Effective communication techniques

Careers after the course

- > Central Heating Engineer: £24,000-£34,000
- > Gas Engineer: £18,000-£32,000
- > Plumber: £21,000-£35,000

LEVEL 1**Plumbing Level 1 (Ambition)****One year**

Entry requirements Minimum one GCSE at grade 3 (E), two GCSEs at grade 2 (F) or completion of Aspire at Entry Level 3 and maths and English at grade 1.

Progression Level 2 Plumbing course, employment or Apprenticeships.

LEVEL 2**Plumbing Level 2****One year**

Entry requirements Minimum one GCSE at grade 4 including Science and two GCSEs at grade 3 (D) including maths and English or Level 1 qualification in a related subject.

Progression Related Level 3 course or employment/ Apprenticeship.

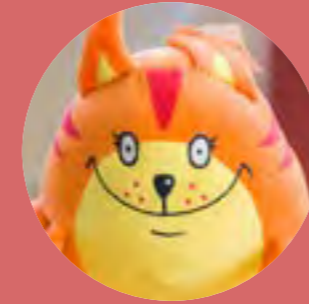
Every applicant will need to be interviewed for their chosen course and may need to provide a reference.

> MANY PLUMBERS ARE SELF-EMPLOYED RUNNING THEIR OWN BUSINESSES OTHERS MAY WORK FOR LARGE PLUMBING OR CONSTRUCTION COMPANIES.



Chris Carnegie

Plumbing Level 3/Previous School: Ormskirk School/ I chose to come to Southport College because it is close to home and also the plumbing course offered everything that I wanted. Speaking to the tutors at Open Evening really sold it to me; they are lovely and all have first-hand knowledge of the industry that they pass on to the students. The facilities here are great too; They give you a good knowledge and understanding of a real working environment in the plumbing industry. I have really enjoyed the practical learning on the course. I am a hands-on learner so this is the best way for me to learn rather than sitting in a classroom all day. I hope to progress onto an Apprenticeship next year to continue learning about the plumbing trade. In the future I want to go into the property industry.



CHILDCARE

Children are an integral part of our country's future so it is imperative that the care offered for them is of a very high standard. This means that only those qualified and with experience working with children will be successful in gaining a career in the industry. A career in childcare requires careful planning and preparation and a wide skill set including communication, problem-solving skills and the ability to work with others.

Many of our childcare students move straight into employment in the childcare industry in local nurseries and early years settings. Some choose to use the experience they've gained to work overseas securing employment as au pairs, nannies and childcare agency staff.

Other students progress on to higher education studying degrees such as Early Years, Education Studies and Children, Young People and their Services.

Why choose Southport College?

- > Our Childcare department has been part of a £2.6million refurbishment creating one of the most modern learning environments in the region, giving students unique learning spaces with simulated nurseries, state-of-the-art facilities and open plan work spaces.
- > We have industry-specific equipment to practise skills such as a designated playroom and realistic baby simulators.
- > Our tutors all have extensive industry knowledge from previous employment in a broad range of roles within the sector such as nursing, play worker, nursery nurse, child minder, police officer and teacher.

Regular work placements are arranged for students to develop their knowledge and skills.

What will I study?

- > Personal and professional practice
- > Children's development
- > Children's health and care
- > Principles for early years provision
- > Safeguarding
- > Legislation and current frameworks
- > Children's literacy and mathematics
- > Children's play and development
- > Observation and assessment of children
- > Health & safety
- > International perspectives of early years education
- > Preparing children for school
- > Being a reflective practitioner
- > Working in partnership

Careers after the course

- > Early Years Practitioner: £17,000-£22,000
- > Youth Worker: £19,000-£30,000
- > Early Years Teacher: £18,000-£30,000
- > Primary School Teacher: £19,000-£28,000
- > Paediatric Nurse: £22,000-£35,000

LEVEL 1

Health & Childcare Level 1 (Ambition)

One year

Entry requirements Minimum one GCSE at grade 3 (E), two GCSEs at grade 2 (F) and maths and English at grade 1.

Progression Related Level 2 course with maths and English entry requirements achieved.

LEVEL 2

Intro to Early Years Education Level 2

One year

Entry requirements Minimum one GCSE at grade 4 and two GCSEs at grade 3 (D) including English and maths or Level 1 Diploma in a related subject and Level 1 Functional Skills in maths and English.

Progression Related Level 3 course with maths and English entry requirements achieved.

LEVEL 3

Level 3 Diploma in Early Years and Care: The Early Years Educator Equivalent to A Levels (up to 168 UCAS points)

Two years

Entry requirements Five GCSEs at grade 9-4 (A*- C) including maths and/or English or pass/merit in a related Level 2 Extended Certificate and English and maths at Level 2.

Assessment This course contains some externally assessed units.

Progression Employment or university. This course will also give you a license to practice.

Level 3 Diploma Children's Workforce One year

Entry requirements Five GCSEs at grade 9-4 (A*- C) including maths and/or English or pass/merit in a related Level 2 Extended Certificate and English and maths at Level 2.

Progression This course leads directly into employment for anyone who wants to work as an early years practitioner or teaching assistant/related role and provides you with a license to practice.

Every applicant will need to be interviewed for their chosen course and may need to provide a reference.



Ellis
Dales
...

Diploma in Early Years and Care: The Early Years Educator Level 3/Previous School: Christ the King Catholic High School/ After looking at other colleges, I chose to come to Southport College as the facilities including a working nursery are excellent. The staff are really supportive and friendly too. The Early Years Educator course is great. The placement weeks have been amazing; I went to Churchtown Primary school and YMCA nursery, and learning from staff on the job has been priceless. We also have the opportunity to work with children from local nurseries as they come into College once a week. I wouldn't have been able to get these real life working experiences doing A Levels! The course at Southport College has given me everything I need to progress onto my chosen career path. Next year I am going to Edgehill University to study Primary Teaching.

HEALTH
& SOCIAL CARE

Working in the health and social care sector can be both rewarding and fulfilling and you could find yourself providing support to people at the best and worst times of their lives. The UK has both an ageing population and an increasing birth rate, which means that health and social care skills are going to be in demand for some time to come. If you are looking to pursue a career in nursing, social work, occupational therapy, midwifery or other health and social care roles.

Our Health & Social Care courses are an ideal start. Our course are vocational, so you will be putting your skills in to practise as you learn. The courses are designed to give you the skills employer are looking for and provide you with valuable experience in your chosen sector.

Why choose Southport College?

- > The health and social care team have close links with Southport and Ormskirk Hospital and Liverpool Women's Hospital, providing students the opportunity to gain work experience within the NHS.
- > All students will undertake work experience through a weekly work placement within a health and social care setting.
- > Our course tutors have vocational experience in the sector, including specialists in paediatrics, spinal injuries, vascular surgery, sexual health and midwifery and pass on their wealth of knowledge to students in our state-of-the-art facilities.
- > We have a hospital ward simulation unit where you can gain experience of using electronic beds, a pregnancy belly that simulates pregnancy and an ageing suit that simulates the process of growing old.

Regular work placements are arranged for students to develop their knowledge and skills.

What will I study?

- > Creative activities (Level 2)
- > Impact of diet/Nutrition (Level 2/Level 3)
- > Lifespan development (Level 2/Level 3)
- > Working in health and social care (Level 3)
- > Anatomy and physiology (Level 2/Level 3)
- > Supporting additional needs (Level 3)
- > Mental health awareness (Level 3)

Careers after the course

- > Care Assistant:
£18,000
- > Midwife:
£22,000-£35,000
- > Nurse:
£22,000-£35,000
- > Social Worker:
£22,000-£40,000

Every applicant will need to be interviewed for their chosen course and may need to provide a reference.

LEVEL 1**Health & Childcare Level 1 (Ambition)****One year**

Entry requirements Minimum one GCSE at grade 3 (E), two GCSEs at grade 2 (F) and maths and English at grade 1.

Progression Level 2 course in a related subject

LEVEL 2**Health and Social Care Level 2 Diploma****One year**

Entry requirements Minimum one GCSE at grade 4 and two GCSEs at grade 3 (D) including English and maths or Level 1 Diploma in a related subject and Level 1 Functional Skills in maths and English.

Progression Level 3 Health and Social Care, Childcare or other relevant qualification, Apprenticeship or employment.

LEVEL 3**Health and Social Care Level 3 Foundation Diploma****Equivalent to 1.5 A Levels (up to 84 UCAS points)****One year**

Entry requirements Five GCSEs at grade 9-4 (A*- C) including maths and/or English or pass/merit in a related Level 2 Extended Diploma and maths and/or English at Level 2.

Assessment This course contains some externally assessed units.

Progression to year 2 or University to study nursing, occupational therapy, social work or other related courses or employment

Health & Social Care Level 3 Extended Diploma Acorn Pathway**Equivalent to three A Levels (up to 168 UCAS points)****Two years**

Entry requirements Minimum of five GCSEs at grade 9-4 (A*- C) including maths and English and you will also need a second interview with NHS staff.

Assessment This course contains some externally assessed units.

Progression University to study nursing, occupational therapy, social work, other related courses or employment.

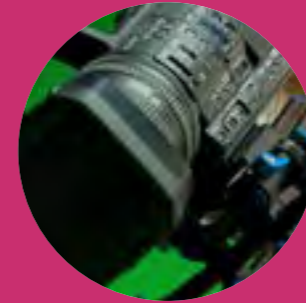


Jade
Radcliffe
...

Health and Social Care Level 3 Extended Diploma Acorn Pathway/Previous School: Tarleton Academy/ I chose to come to Southport College because of the Acorn Pathway. There isn't any other course local to me with the opportunities available through this course. The opportunity to do hospital placements has been amazing; learning the skills needed to work in the industry, the confidence to work with real patients and gaining knowledge and skills from nurses in the job now has been invaluable. I originally wanted to be a midwife however working on the children's wards has inspired me to go on to study paediatric nursing next year at Edgehill University. The BTEC route has been the best option for me. You are not sat in a classroom all day; getting work experience as well as learning the theory has given me everything I need to progress into my chosen career.



MOMENTS



66
ART & DESIGN

72
CREATIVE MEDIA
PRODUCTION

76
GAMES DESIGN



80
GRAPHIC DESIGN

84
PERFORMING ARTS

88
PHOTOGRAPHY



ART & DESIGN

The work of students qualified in art and design can be seen all around you. Paintings and sculptures in galleries, interior design, the latest fashions on the high street, film sets and stages for theatre and concerts are all developed with the input of a qualified artist or designer.

There are so many opportunities available to students who choose to study Art and Design. Previous students have gone to university to study a range of degree courses including Fine Art, Makeup & Special Effects, Fashion, Art History, Surface Pattern and Illustration. University destinations include Leeds College of Art, University of Central Lancashire, Manchester Metropolitan University, St Martins and University of the Arts London. Some students chose to stay on to study one of our range of higher education courses, continuing to take advantage of the great facilities and high quality teaching at Southport College.

www.instagram.com/artteamsouthportcollege/

Why choose Southport College?

- > Our tutors have all worked as artists or fashion designers and continue to make and exhibit their own work. They pass on their extensive industry knowledge to students and also help them to prepare to host an end of year exhibition showcasing their hard work to the public and employers.
- > Students are also given the opportunity to go on a range of trips. Last year students went to Berlin and London to experience the culture and art of the city.
- > Our courses prepare students for university, tutors provide strong positive guidance to students and the courses have very successful progression rates.
- > We deliver the prestigious UAL (University of the Arts London) qualifications which are specially designed to be relevant to the needs of the creative arts industry.

What will I study?

- > Painting techniques
- > Drawing techniques
- > Using Photoshop
- > Textiles
- > Printmaking
- > Fashion
- > Life drawing
- > Contextual studies

Careers after the course

- > Interior Designer: £18,000-£45,000+
- > Fashion Designer: £18,000-£60,000
- > Art Teacher: £22,000-£37,000
- > Product Designer: £19,000-£50,000
- > Tattooist: £15,000+
- > Art Therapist: £26,000-£48,000
- > Visual Merchandiser: £12,000-£55,000
- > Art Gallery Curator: £18,000-£40,000

LEVEL 1

Creative Design Level 1 (Ambition)

One year

Entry requirements Minimum one GCSE at grade 3 (E), two GCSEs at grade 2 (F) or completion of Aspire at Entry Level 3 and maths and English at grade 1.

Progression Level 2 course such as Art & Design

LEVEL 2

Art & Design Level 2

One year

Entry requirements Minimum one GCSE at grade 4 and two GCSEs at grade 3 (D) including maths and English or Level 1 Diploma in a related subject and Level 1 Functional skills in maths and English.

Progression Employment or Level 3 Art & Design

LEVEL 3

Art & Design Level 3 Extended Diploma Equivalent to Three A Levels (up to 168 UCAS points)

Two years

Entry requirements Five GCSEs at grade 9-4 (A*- C) including maths and/or English or pass/merit in a related Level 2 Extended Diploma and maths and/or English at Level 2.

Progression Employment or university

Every applicant will need to be interviewed for their chosen course and may need to provide a reference. Applicants will also be required to show a good portfolio of work at interview.

> PREVIOUS STUDENTS HAVE GONE TO UNIVERSITY TO STUDY A RANGE OF DEGREE COURSES.

Victoria Iddon

Art & Design Level 3 Extended Diploma/Previous School: Range High School/I went to sixth form after finishing school but it wasn't for me so decided to go to Southport College. I chose to do the Art course as it's so diverse and you learn so much. I've loved the freedom you get on the course to explore whatever aspect of art you want. There is no pressure to follow a certain route; you can focus your projects around your strengths and interests. And the facilities are amazing. You get a personal work space in the workshop to work on your pieces and display them. The equipment available is great too! Coming to Southport College was the best decision I ever made! I'm going to LJMU next year to study Fine Art and certainly wouldn't have got my place had I not been to Southport College.

ART & DESIGN



ART & DESIGN



CREATIVE MEDIA
PRODUCTION

This is a very exciting and dynamic industry with many different career opportunities. Creative Media includes a wide range of specialisms such as television, film, radio, interactive media, computer games development, photo imaging, press, marketing and advertising. It is a dynamic and expanding sector and the UK Entertainment & Media industry is predicted to be worth £76 billion by 2022. Emerging new technologies such as virtual reality, artificial intelligence and media interactivity are anticipated to become increasingly important to the sector.

Why choose Southport College?

- > Southport College has the best facilities in the area: fully equipped fashion and print workshops, state-of-the-art Mac suites and exciting photography and TV studios.
- > Students work on live projects with companies such as Farmageddon, Samaritans, Learning on Screen Awards (British Film Institute), helping to prepare them for careers in the industry.
- > Current Creative Media students have created a College soap opera organised exactly as it would be in the industry with students taking on all the jobs from scriptwriting to directing. They also collaborated with Performing Arts students who were auditioned and cast in the roles.
- > The College also have strong links with the Atkinson in Southport, allowing students to exhibit work, films and animations and take part in collaborative projects.
- > Students regularly attend trips to develop their skills and knowledge of the industry. Recent trips include: Berlin, Bradford Media Museum, Media City in Salford and the Photography Show in Birmingham.

What will I study?

- > Working to a brief with clients
- > Pre-production Techniques
- > Audio-Visual Editing Techniques
- > Single Camera Techniques
- > Sound Recording Techniques
- > Digital Photography
- > Creating a Show-reel
- > Multi-Camera Production
- > Final Cut Pro
- > Adobe Creative suite

Careers after the course

- > Lighting Technician: £15,000-£25,000
- > Sound Engineer: £13,000-£40,000
- > TV Producer: £18,000-£55,000
- > Marketing Executive: £18,000-£40,000
- > Newspaper Journalist: £15,000-£50,000
- > Animator: £12,000-£30,000

LEVEL 2

**Creative Media Production & Technology
Level 2****One year**

Entry requirements Minimum one GCSE at grade 4 and two GCSEs at grade 3 (D), including English and maths or Level 1 Diploma in related subject and Level 1 English language and maths.

Progression Level 3 course such as Creative Media Production, Graphic Design, or Games and Animation or Apprenticeship.

LEVEL 3

**Creative Media Production
Level 3 UAL Diploma
Equivalent to three A Levels
(up to 168 UCAS points)****Two years**

Entry requirements Five GCSEs at grade 9-4 (A*- C) including English or pass/merit in a related Level 2 Extended Certificate and English and maths at Level 2.

Progression University or employment

Every applicant will need to be interviewed for their chosen course and may need to provide a reference. Applicants will also be required to show a good portfolio of work at interview.

> CREATIVE MEDIA INCLUDES A WIDE RANGE OF SPECIALISMS SUCH AS TELEVISION, FILM, RADIO, INTERACTIVE MEDIA, COMPUTER GAMES DEVELOPMENT, PHOTO IMAGING, PRESS, MARKETING AND ADVERTISING.

Katie
Brindle

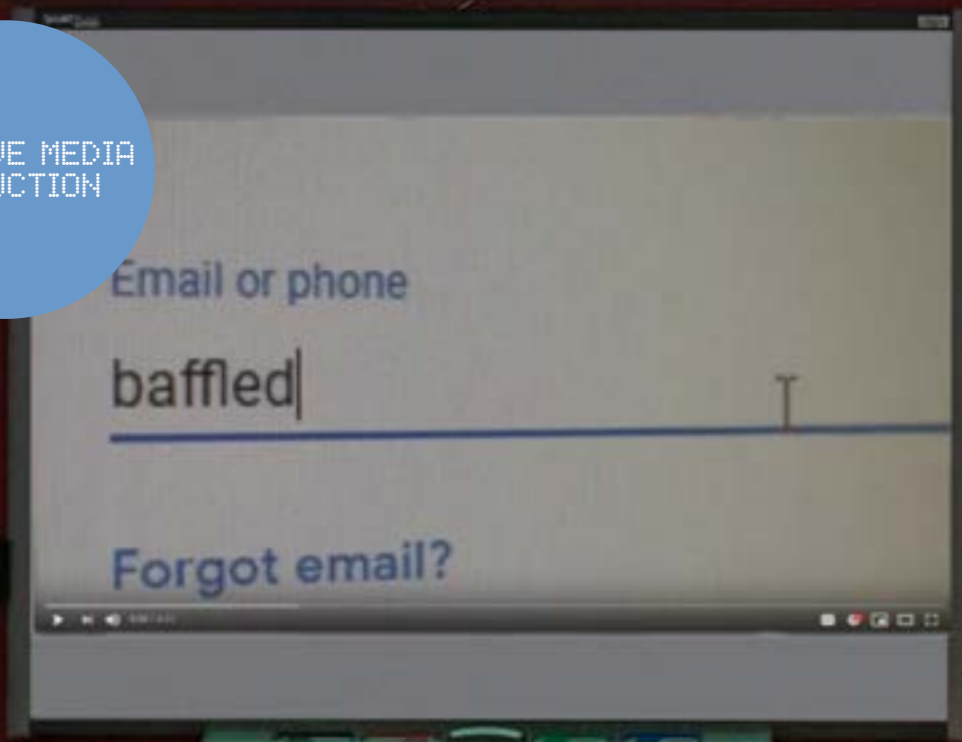
Creative Media Production Level 3 Extended Diploma/Previous School: Stanley High School/ I attended a taster day at Southport College with my school and loved it. The facilities really impressed me and the BTEC route seemed a more manageable way for me to get where I wanted in the future.

I have really enjoyed the Creative Media course, especially the opportunities it's opened up for me. I have had the chance to get involved in extra projects such as filming our University Centre Graduation ceremony and also our College Soap Opera 'Baffled?'

One of the reasons I chose the college was the amazing facilities available to students. Being able to use any camera, lens etc. in or out of college, is great!

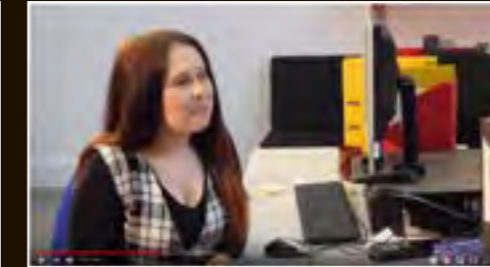
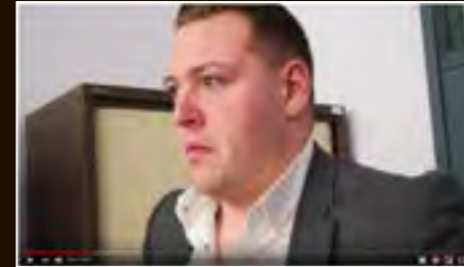
I am going to Manchester Metropolitan University next year to study PR and Marketing.

CREATIVE MEDIA PRODUCTION



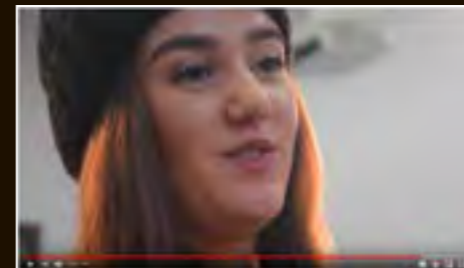
> **Baffled?** A SOAP OPERA SET IN AN INTERNET NEWS COMPANY OFFICE, DOCUMENTING THE LOVES, SECRETS AND RIVALRIES OF ITS YOUNG JOURNALISTS. DEVELOPED, WRITTEN AND PRODUCED BY SOUTHPORT COLLEGE MEDIA STUDENTS AND STARRING SOUTHPORT COLLEGE PERFORMING ARTS STUDENTS.

Baffled?
Episode 1
Soap opera set in an internet news company office, documenting the loves, secrets and rivalries of it's young journalists.



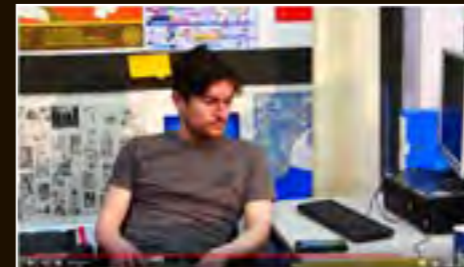
Baffled?
Episode 5
Is Mike and Ellie's marriage really as strong as she thinks?

Baffled?
Episode 2
What is going on between Mike and Savannah?



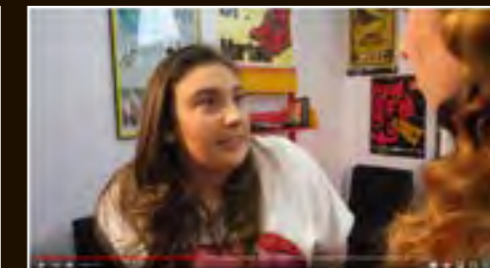
Baffled?
Episode 6
Has Savannah been dumped? Will anyone ever believe Trish and is Jen's secret admirer really a handsome stranger?

Baffled?
Episode 3
Will Mike's sweet talk work on Ellie and why is Ollie so averse to working closely with Lewis?



Baffled?
Episode 7
Is Ellie right to be worried? Why is Lily secretly filming everyone?

Baffled?
Episode 4
Is Ellie right to think Savannah can't come between her and Mike?



Baffled?
Episode 8
The final exciting instalment. Will Ollie and Lewis stop pretending to hate each other? How will the office cope with losing one of their own and will Ellie finally see Mike's true colours?

https://www.youtube.com/results?search_query=southport+college

GAMES DESIGN

Games Design is a fast-growing industry that offers many exciting and creative career opportunities. E-sports and virtual reality are two expanding areas and in the UK virtual reality is the fastest growing entertainment and media sector. The UK video games industry, contributes around £3 billion to the economy, employs nearly 50,000 people and boasts some of the finest video games studios globally, many of which are situated in the North West. A number of our former students have gone on to work at major companies on titles such as Grand Theft Auto, Lego Hobbit and Carmageddon Max Damage.

Why choose Southport College?

- > We were the first college in the North West to offer this course so you will be joining a course with a fantastic reputation and excellent facilities.
- > You will learn many transferable skills from the Games Design course including project management, pitching and communicating, audio editing and Photoshop techniques.
- > Students will use industry-based software to build 2D and 3D games to create engaging and enjoyable experiences.

What will I study?

- > Game construction
- > 3D modelling
- > Storyboarding
- > Games platforms
- > Project management
- > Photoshop
- > Audio editing
- > Quality assurance
- > Communication and Team Building

Careers after the course

- > Games Designer: £25,000-£50,000
- > Animator: £20,000-£40,000
- > Games Tester: £12,000-£30,000
- > Character Artist: £18,000-£40,000
- > Project Manager: £18,000-£45,000

LEVEL 3**Games Design Level 3 Extended Diploma****Equivalent to Three A Levels (up to 168 UCAS points)****Two years**

Entry requirements Five GCSEs at grade 9-4 (A*- C) including maths and/or English or merit in a related Level 2 Extended Certificate and maths and/or English at Level 2.

Progression Employment or university

Every applicant will need to be interviewed for their chosen course and may need to provide a reference. Applicants will also be required to show a good portfolio of work at interview.

**Tia Hardy**

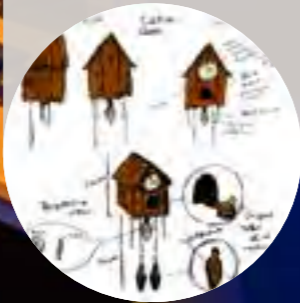
...

Games Design Level 3 Extended Diploma/Previous School: Christ The King Catholic High School/I chose the Games Design course at Southport College as it looked like a really interesting and exciting course. I wanted to study something I enjoy, and gaming has always been one of my hobbies. I really like the practical aspect of the course; throughout the year I have designed and produced my own game; 'Escape a mansion'. The course has prepared me for what to expect in the industry and has given me a good ground knowledge for what I want to go into in the future. I am going to Manchester Metropolitan University next year to study Creative Writing.

GAMES DESIGN



Using imagination and practical research to create ideas for characters and environments; experimenting with different designs



Producing high quality imagery to illustrate what the finished game will look like. These illustrations will be used to 'pitch' the game idea to a sponsor.



Writing a formal document which explains how the game should be constructed, including animation storyboards and rules for gameplay and scoring systems.



Building 3D assets for the game - characters, objects and environment. Applying coloured textures, embedding bones and animating them.



Placing assets into a 'game engine' and creating rules to describe how they move and interact.



Packaging and producing a finished product..



THE TASK OF DESIGNING AND BUILDING A COMPUTER GAME IS A COMPLEX AND CHALLENGING PROCESS..

GRAPHIC DESIGN

Go to college or gain work experience? On the Graphic Design and Illustration course at Southport College you will do both. The course is clearly focused on future progression, delivering real industry practice with the aim of learners progressing to university, directly into industry or on to a modern Apprenticeship.

During the course you will develop a broad portfolio of graphics, product design, animation, photography and illustration to enable you to progress to a diverse range of career pathways, whilst also developing your own specialism.

Why choose Southport College?

- > Our team has close links with industry professionals who are regularly invited into College to deliver presentations and workshops with students. 50% of projects on the course are also 'live': students work to real-life briefs for businesses and organisations or brand development, footwear campaigns, issue-based projects, international competitions and design.
- > We have excellent facilities and resources including a fully equipped design studio, professional gallery space, Apple Mac suite, photography, film, printmaking and TV studio, industry-standard software and a 3D printer.
- > We deliver the prestigious UAL (University of the Arts London) qualifications which are specially designed to be relevant to the needs of the creative arts industry.

What will I study?

- > Traditional and computer-based illustration
- > Printmaking
- > Image manipulation
- > Photography
- > Branding
- > Advertising/Marketing
- > Typography
- > Illustration
- > Animation
- > Drawing
- > Painting
- > Website visual design

Careers after the course

- > Graphic Designer: £17,000-£30,000
- > Product Designer: £17,000-£40,000
- > Illustrator: £14,000-£40,000
- > Animator: £14,000-£36,000
- > Interior Designer: £18,000-£45,000
- > Marketing/Advertising: £25,000-£50,000
- > Photographer: £18,000-£50,000
- > Web Designer: £22,000-£30,000

LEVEL 3

**Graphic Design
Level 3 UAL Diploma
Equivalent to three A Levels
(up to 168 UCAS points)**
Two years

Entry requirements Five GCSEs at grade 9-4 (A*-C) including English and/or maths or pass/merit in a related Level 2 Extended Certificate and English and maths at Level 2.

Progression University or employment

Every applicant will need to be interviewed for their chosen course and may need to provide a reference. Applicants will also be required to show a good portfolio of work at interview.

> 50% OF PROJECTS ON THE COURSE ARE ALSO 'LIVE': STUDENTS WORK TO REAL-LIFE BRIEFS FOR BUSINESSES AND ORGANISATIONS E.G. BRAND DEVELOPMENT, FOOTWEAR CAMPAIGNS, ISSUE-BASED PROJECTS, INTERNATIONAL COMPETITIONS AND DESIGN.



**Matthew
Latham**

Graphic Design Level 3 Extended Diploma/Previous School: Ormskirk School/Southport College was much better than the other colleges I had visited; the facilities and resources were great with industry standard equipment. It's like a specialist Art college! I have been doing bits of graphic design since I was young and always loved it. I studied it for GCSE so always knew I wanted to continue it at college. I have really enjoyed the freedom you get on this course. You can work at your own pace and tailor your projects to your own interests. The tutors are really friendly and are always there to help. They know so much about the industry and pass all that knowledge on! I am going to UCLan next year to study Graphic Design. At Southport College I've been taught everything I need to go out into the world of work. I don't think I could have gained a better education than I have here!

GRAPHIC DESIGN



Starring
Johnny Depp & Kirsten Dunst
Tom Cruise, Lee Remick, Brad Pitt, Christian Bale, Penelope Banton, Carey Mulligan and more stars in
Screenplay by **Sam Seltzer & Sam Hart** Directed by **Matthew Del Cury**
Produced by **Richard DZandic & John Coats**



PERFORMING ARTS

> JUST A SMALL SAMPLE OF OUR MANY VARIED AND EXCITING PRODUCTIONS

Disco Inferno

A musical set in London in 1976; the hottest summer on record. 'Disco Inferno' tells the story of an ambitious and talented hopeful, Jack, and his 'burning' desire to make it in the music industry. Working late in a London nightclub, Jack meets Lady Marmalade - a femme fatale right-hand helper of the Devil. Dreaming of becoming successful, he makes a Faustian pact with her, trading his soul to fulfil his wildest fantasies.



The Cherry Orchard
by Anton Chekhov

In *The Cherry Orchard*, impoverished landowner Lyuba Ranevskaya and her family must choose to either sell off their land or raze their cherry orchard in order to pay Lyuba's mortgage. Lyuba's ultimate decision to sell the property destroys the dreams of her family members, who are then consigned to lives of servitude and regret.



The Crucible

The Crucible (a play) is a fictionalized account of the Salem Witch trials of 1692, in which 19 innocent men and women were killed by hanging and hundreds convicted before the panic subsided.

PERFORMING ARTS

Our courses are designed specifically to help those who wish to pursue a career as a professional performer. However, they also provide strong transferable skills that can be applied to a variety of careers and further education courses. These include confidence, communication, self-motivation, teamwork, time management and the ability to think creatively and independently.

Our performing arts team, as well as being fully trained teachers, also work in the industry as performers and are able to pass on their experience and advice to students.

Why choose Southport College?

- › We have a fantastic purpose-built £2.5 million theatre with state-of-the-art facilities including dance studios, rehearsal studios, a 100+ seat theatre and recording studio.
- › The course is small, friendly and self-contained. Due to smaller class sizes you will receive more individual attention and great pastoral care from the performing arts team. You will study drama, dance and singing which will prepare you for employment or further training in a competitive industry.
- › Our past students, as well as going on to successful performing careers, have secured roles in industries such as presenting, administration, writing, marketing and teaching positions.
- › During the course, you will have the opportunity to perform in a number of acclaimed productions from plays and devised pieces to full-scale musicals and you will also take part in performance tours which are taken to local schools. You have the chance to devise and perform your own pieces of work too.

What will I study?

- › Drama
- › Dance
- › Singing
- › Full scale musicals/plays
- › Script analysis
- › Directing devised theatre
- › Business and the context of performing arts
- › Choreography
- › Acting to camera
- › Opportunities in technical theatre

Careers after the course

There are a wide variety of options involving performing, but this course can also lead to a diverse range of non-performing opportunities.

- › Acting, dance or musical roles within theatre, film and TV and studio settings
- › Scriptwriting
- › Directing
- › Choreography
- › Composing and musical direction
- › Technical roles such as stage management, sound, lighting and camera operators
- › TV, news, theatre and music production
- › General administration and ticketing
- › Roles in education such as teaching, private tuition, drama or music therapy

LEVEL 2**Performing Arts Level 2 One year**

Entry requirements Minimum one GCSE at grade 4, two GCSEs at grade 3 (D), including English and maths or Level 1 Diploma in related subject and Level 1 English language and maths.

Progression Level 3 Performing Arts.

LEVEL 3**Performing Arts Level 3 Extended Diploma Equivalent to Three A Levels (up to 168 UCAS points) Two years**

Entry requirements Five GCSEs at grade 9-4 (A*-C) including English and/or maths or pass/merit in a related Level 2 Extended Certificate and English and maths at Level 2.

Progression HND in Performing Arts at Southport College, Employment, university or stage school to study dance, theatre, drama or other related subjects.

Assessment This course contains some externally assessed units.

Every applicant will need to be interviewed for their chosen course and may need to provide a reference.

You will also have an audition in which you will need to demonstrate potential in drama, dance and singing.

Zombie Prom The Musical

This girl loves ghoul rock and roll Off Broadway musical is set in the atomic 1950s at Enrico Fermi High, where the law is laid down by a zany, tyrannical principal. Pretty senior Toffee has fallen for the class bad boy but family pressure forces her to end the romance, and he charges off on his motorcycle to the nuclear waste dump. He returns glowing and determined to reclaim Toffee's heart. Packed with humour, a zombie and a selection of original songs in the style of the 50s, the action rocks across the stage.

Ben Mawdsley

Performing Arts Level 3 Extended Diploma/ Previous School: Birkdale High School/ I looked at numerous colleges however none of them offered what I wanted from a Performing Arts course. The course at Southport College is a fantastic course which will get you ready to go out and become successful in the industry. Getting on stage is amazing but doing all the preparation to plays (writing, staging, directing etc.) is great too and the productions never feel like low budget college productions. Having the opportunity to get involved in such a broad variety of shows from musicals to straight plays allows you to develop so many different skills. The course also teaches you a lot of technical knowledge and has really broadened my understanding and knowledge of performing. I am staying at Southport College next year to study the HND Performing Arts and in the future would like to go on to be a voice actor on video games animated films and TV shows.

PHOTOGRAPHY

Photography is one of the only forms of communication that is truly universal, crossing social and cultural boundaries and interweaving itself seamlessly with so many aspects of our lives. Photography finds its way into almost every industry from marketing to education to space science. Photography courses are exciting, demanding, challenging and stimulating and they offer a broad learning experience.

Why choose Southport College?

- › The College has fantastic, extensive facilities including a darkroom and photography studios for students to use.
- › Students are encouraged and assisted to enter lots of photography competitions such as Association of College competition and Harman Technology competition. They often achieve a very high level, meaning that they complete the course with many awards alongside their qualification.
- › The College have strong links with the Atkinson in Southport, giving students the option to exhibit work, films and animations and also take part in collaborative projects
- › Regular trips provide students with inspiration for their portfolio work. In the past students have travelled to Berlin, Bradford Media Museum, Media City in Salford and The Photography Show in Birmingham.

What will I study?

- › Working to a brief with clients
- › Choosing and preparing locations
- › Setting up camera, lighting and equipment
- › Composing and taking photographs
- › Sound/video recording techniques
- › Light-room workflow
- › Adobe Photoshop
- › Promotions, advertising and administration
- › Creating a professional portfolio

Careers after the course

- › Photographic Assistant: £12,000-£17,000
- › Photographic Stylist: £12,000-£35,000
- › Full-time Photographer: £18,000-£50,000
- › Press Photographer: £12,000-£20,000

LEVEL 3**Photography Level 3 Extended Diploma Equivalent to three A Levels (up to 168 UCAS points)****Two years**

Entry requirements Five GCSEs at grade 9-4 (A*-C) including maths and/or English or pass/merit in a related Level 2 Extended Certificate and English and maths at Level 2.

Progression University or employment

Every applicant will need to be interviewed for their chosen course and may need to provide a reference. Applicants will also be required to show a good portfolio of work at interview.



Will
Byrne
...

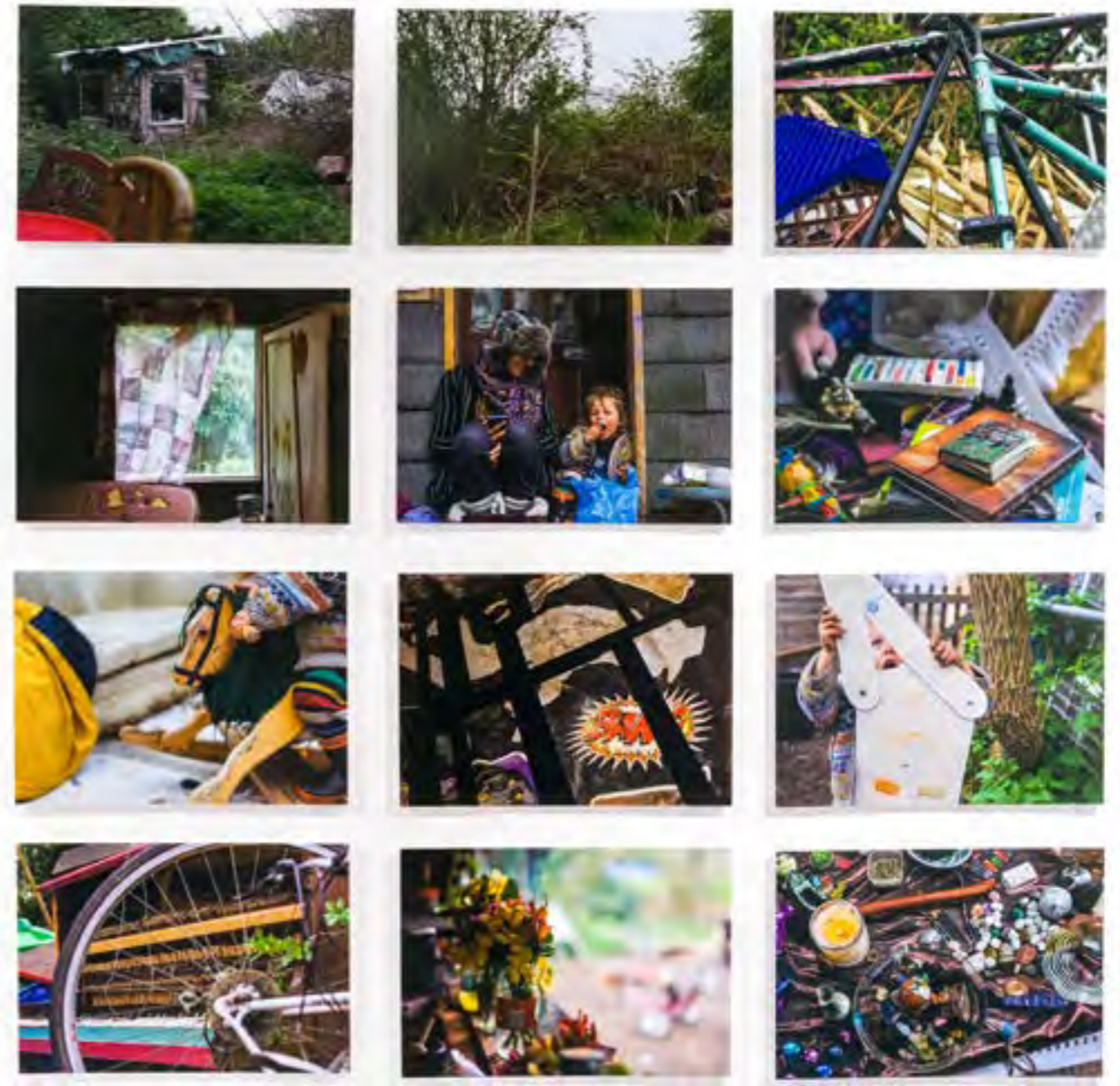
Photography Level 3 Extended Diploma/Previous School: Burscough Priory Academy/I've always had cameras and taken photos since a young age and always knew I wanted to become a photographer in the future. The BTEC course is the perfect way to get me to this career so was the obvious option for me. I have loved the freedom you get as a student on this course; your vision is your vision. The tutors are lovely and supportive and will help you to achieve your goals without telling you what to do and the facilities are amazing. The photo studio and dark room are great and having the mac suite for editing is perfect. I have learnt so much on the course from pin hole photography to modern, digital photograph as well as all the skills and knowledge I need to be successful in the future. I am going to the University of Arts London to do fashion photography next year with the plan to travel the world as a fashion photographer doing big shoots for magazines, designers etc.

PHOTOGRAPHY

Portfolio



www.instagram.com/
southport_college_photo_dept/





PUBLIC SERVICES

Our public services courses are ideal for students wishing to pursue a career in uniformed public service. Our courses help students to develop the skills, knowledge and experience to go on to pursue a career in the Army, RAF, Navy, police service, fire service, prison service, outdoor activity leadership, expedition leadership and outward bound and more. Past students have gone on to study degree courses such as Psychology, Outdoor Leadership, Policing Studies, Criminology and Law.

Why choose Southport College?

- > The Public Services tutors have a broad range of knowledge and experience to share with students gained from careers in the Armed Forces, Royal Marines and the police force.
- > Students take part in regular trips and activities including indoor skiing, water based activities, climbing, expeditions and various activities with the uniformed services.
- > The department has links with the armed forces, police and fire service which means students can experience valuable insight in to the sector they are interested in.

What will I study?

- > Government, Policies and the Public Services
- > Leadership and Teamwork
- > Fitness Testing and Training for the Uniformed Public Services
- > Outdoor and Adventurous Activities
- > Employment in the Uniformed Public Services
- > Planning and Management of Major incidents
- > Understanding the impact of War, Conflict and Terrorism

Careers after the course

- > Fire Fighter: £21,000-£35,000
- > Police Officer: £22,000-£36,000
- > Soldier: £13,000-£100,000+
- > Outdoor Activities Instructor: £18,000
- > Expedition Leader: £25,000

LEVEL 3

Public Services Level 3 Extended Diploma Equivalent to Three A Levels (up to 168 UCAS points)

Two years

Entry requirements Five GCSEs at grade 9-4 (A*- C) including maths and/or English or pass/merit in a related Level 2 Extended Certificate and maths and/or English at Level 2.

Progression Employment or university

Every applicant will need to be interviewed for their chosen course and may need to provide a reference.



Nathan Cliffe
...

Public Services Level 3 Extended Diploma/Previous School: Meols Cop High School/ I chose Southport College because of it's location and the Public Services course as it's a great stepping stone to get me to where I want to be in the future. I have really enjoyed the practical element of the course; being able to get out to various places and get involved in different activities. We visit Crosby Lakeside to take part in water sports which has been great! We have also been on many trips such as visiting the Fire Service, the Police, the Army and the Royal Marines. These visits have really helped us understand what these careers involve, helping us to make choices about our future. The staff at College all have experience in the public service sector so pass on their skills and knowledge. They are really helpful and understanding too. I am going to UCLan next year to study Law and would eventually like to join the Fire Service in the future.



SPORT

If you have a passion for sport and fitness we can help you take the next step towards a career in the sport and fitness sector. Our sports courses provide you with the knowledge and skills to progress on to your chosen career whether you wish to be a sports coach, sports journalist, sports therapist or sports person in a particular discipline. Past students have gone on to study for degree courses such as Sport Rehabilitation, Sports Coaching, Sports Therapy, Physical Education & School Sport, Sports & Exercise Science.

Why choose Southport College?

- > Southport College students have access to a range of facilities including the sports hall, fitness suite and dance studio as well as access to the 3G sports pitches at KGV College.
- > Our staff are all experts in their field with invaluable industry experience; experience they will pass on to you.
- > The team also have strong links with local sports-related organisations such as Everton FC, Southport FC and North West Soccer Schools.
- > Students run regular leadership activities including running coaching sessions for school children and also visit local fitness clubs such as Dunes Leisure Centre, Lakeside Leisure Centre, Chill Factore and Marine Lake.
- > Sport students also have the opportunity to join College teams such as football, rugby, netball and volleyball and go on a range of trips including ice skating, camping, cycling, bowling, swimming, climbing, water sports and golfing.

What will I study?**Level 1**

- > Assisting a leader of sports or active leisure activities to plan and deliver an activity
- > Planning a healthy diet
- > Planning own fitness programme
- > Risk and hazards in sport and active leisure
- > Taking part in exercise and fitness
- > Taking part in Sport

Level 2

- > Leading sport safely and effectively
- > Coaching sport
- > Getting others active outdoors
- > Leading sport and physical activity
- > Delivering a sports activity event

Careers after the course

- > PE Teacher:
£21,500-£35,000
- > Sports Therapist:
£17,000-£35,000
- > Nutritionist:
£21,000-£34,000
- > Sports Coach:
£14,000-£35,000
- > Sports Scientist:
£18,000-£60,000

LEVEL 1**Sport Level 1 (Ambition)****One year**

Entry requirements Minimum one GCSE at grade 3 (E), two GCSEs at grade 2 (F) and maths and English at grade 1 or completion of Aspire at Entry Level 3 and maths and English GCSE or equivalent at grade 1.

Progression Level 1 or employment

Sport Level 1 (full-time Diploma)**One year**

Entry requirements Minimum 3 GCSEs at grade 3 (E) and English and maths at grade 2.

Progression Level 2 or employment

LEVEL 2**Sport and Activity Leaders Level 2****One year**

Entry requirements Minimum one GCSE at grade 4 and two GCSEs at grade 3 (D), including English and maths or Level 1 Diploma in a related subject and Level 1 Functional Skills in maths and English.

Progression Level 3 or employment

LEVEL 3**Sport Level 3**

This course is available at our partner college, King George V at: www.kgv.ac.uk.

Every applicant will need to be interviewed for their chosen course and may need to provide a reference.

***Courses that require an element of working with children or vulnerable adults require students to undertake a compulsory Disclosure & Barring Service (DBS) check.**



Darion Moore

Sport Level 2/Previous School: Holy Family Catholic High School/The course at Southport College was the best course I had seen which suited me. I attended taster days here through my school and really liked the location and facilities of the college. I have really enjoyed all aspects of the course; practical and theory lessons. We are constantly learning about new and interesting topics such as how the body works and how to develop coaching skills. The course has taught me so many new skills in sport but it has also helped me to improve my confidence too. Next year I will be going to KGV College to study Sport Level 3 Extended Diploma. I want to be a Physiotherapist in the future.

SPORT

Environment



There are weekly sessions in sports such as badminton, 5-a-side football, short tennis, dodgeball, basketball, table tennis, yoga, running, walking, benchball and multisports, as well as competitions in short tennis, rounders, table tennis and football.

Plus there is the College Gym, which is free to students and open throughout the week.

The College also has representative teams in 11 a side football, volleyball, rugby union and basketball, and these teams compete on a regular basis throughout the year.

So whether you already play sport competitively and want to join one of our teams; you fancy trying something new; or you just want to join in and make new friends whilst you have fun and stay fit; our friendly, experienced and professional sports staff are here to help you.

> AT SOUTHPORT COLLEGE THERE ARE A WIDE RANGE OF SPORT AND PHYSICAL ACTIVITIES AVAILABLE FOR ALL OUR STUDENTS TO TAKE PART IN WHATEVER YOU ARE STUDYING.

TRAVEL
& TOURISM

Choosing a career in travel and tourism could see you travelling all over the world and there are many career paths and job roles available. Our courses are designed to help you develop the skills valued by employers in the sector, such as communication, customer service team working and the practical work and hands-on experience prepare you for your ideal job or further study at university.

Once you've completed your training you can choose from a wide range of jobs and travel and tourism environments including airlines and airports, travel agencies, conference and event centres, cruise ships, theme parks, tourist destinations and resorts, hotels and restaurants.

Why choose Southport College?

- > Our tutors have experience in the industry including business travel, cabin crew, event management, children's holiday camps and retail travel.
- > We have strong links with local businesses such as Premier Inn, Co-op Travel, Formby Golf Club, easyJet, Liverpool John Lennon Airport, Bliss Hotel and STA travel.
- > Students also regularly visit local hotels including Scarisbrick Hotel, Rosedale Hotel, Talbot Hotel in Southport and the Crowne Plaza and Atlantic Tower Hotel in Liverpool.
- > There are also trips to popular visitor attractions such as Splashworld, Alton Towers, Premier Bowl and Formby Pinewoods.
- > There is an extended placement for all Tourism courses, where students are out on placement, either in blocks, or one day a week, all year
- > Students are also given the opportunity to go on trips to venues such as the World Travel Market, Liverpool John Lennon Airport and Cabin Crew training.
- > The Travel and Tourism department has newly refurbished classrooms and also offers a realistic working environment to students including a cabin crew room, with real airline seats.

What will I study?

- > Worldwide and European holiday destinations
- > Customer service
- > Airports, airline and travel agencies
- > UK travel and tourism sector
- > The role of an overseas resort representative
- > Long-haul destinations
- > Retail and business travel operations
- > **Level 2 Award for Resort Representative** (delivered as part of the Level 2 course) provides the skills, knowledge and understanding required to carry out the role of Resort Representative. It is ideal for those looking to work in this sector and the qualification has been endorsed by Thomas Cook. Thomas Cook will interview students who successfully complete the qualification and meet their minimum criteria.
- > **Level 2 Certificate in Cabin Crew** (delivered as part of the Level 3 course)

Careers after the course

- > Cabin Crew: £12,000-£25,000
- > Events Management: £21,000-£40,000
- > Travel Agent: £13,000-£25,000
- > Hotel Manager: £19,000-£35,000

LEVEL 2**Travel & Tourism Level 2****One year**

Entry requirements Minimum one GCSE at grade 4 and two GCSEs at grade 3 (D), including English and maths or Level 1 Diploma in related subject and Level 1 English language and maths.

Progression Employment in travel and tourism roles or Level 3 Travel & Tourism.

LEVEL 3**Travel & Tourism Level 3 Extended Diploma****Equivalent to Three A Levels (up to 168 UCAS points)****Two years**

Entry requirements Five GCSEs at grade 9-4 (A*- C) including English and maths or pass/merit in a related Level 2 Extended Certificate and English and maths at Level 2.

Progression Employment or university to study business, tourism, event management or other related subjects.

There is also the opportunity for an extended work placement in Year 2.

Every applicant will need to be interviewed for their chosen course and may need to provide a reference.

YuTeng
Zheng

...

Travel & Tourism Level 3 Extended Diploma/Previous School: High school in Manchester/ Southport College was recommended to me by friends as one of the best colleges. The quality of the courses are great so I decided to study here. I have really enjoyed the Travel and Tourism course; the different modules give you lots of knowledge of the industry. The tutors are really nice too. They have lots of knowledge of the subject because they have all worked in the industry and they are very supportive. We have been on lots of different trips on the course, Cabin Crew training in Bournemouth, Blackpool Pleasureland and Alton Towers but best of all, we went to Disneyland Paris! I couldn't fault the course; it's perfect! I am going to Salford University next year to study Tourism Management. I would love to work for an airport or Airline in the future within their marketing team.



data



104
BUSINESS

106
COMPUTING

BUSINESS

Do you aspire to work in management or imagine yourself as a budding entrepreneur? Are you interested in current affairs and the world of business?

In today's business climate there has never been a better time to study this topic. Here at Southport College you will gain an understanding of all elements involved in running a business as well as the detail and depth of knowledge to start a career.

Why choose Southport College?

- > We have industry-experienced tutors who have worked in various business roles.
- > Students have opportunities to put their knowledge and skills into practice by producing fundraising ideas to raise money for non-profit organisations.
- > There is an extended placement for all business courses, where students are out on placement, either in blocks, or one day a week, all year
- > There are chances to be involved in realistic experiences with mock events such as Dragon's Den, where students can present their ideas to representatives from the business world.
- > Tutors regularly organise trips and visits to local, national and international businesses, allowing students to gain more knowledge and experiences from the business world including Land Rover, The Trafford Centre and Blackpool Pleasure Beach, Disneyland Paris.

What will I study?

- > Marketing campaigns
- > Event management
- > Exploring business
- > Human resource management
- > Planning & pitching an enterprise idea
- > Business communication
- > Visual merchandising
- > Web design strategy
- > Developing teams in business
- > Recruitment and selection

Careers after the course

- > Careers after the course
- > Accounting Technician: £22,000-£32,000
- > Chartered Accountant: £26,000-£50,000
- > Buyer: £18,000-£33,000
- > Retail Manager: £21,000-£34,000
- > Marketing Manager: £25,000-£50,000

LEVEL 1**Retail Business and Enterprise Level 1 (Ambition)****One year**

Entry requirements Minimum one GCSE at grade 3 (E), two GCSEs at grade 2 (F) and maths and English at grade 1.

Progression Level 2 course such as IT or Business Administration Level 2 or employment/Apprenticeship.

LEVEL 2**Level 2 Diploma in Skills for Business with an additional Level 1 Technical Award in Business and Enterprise****One year**

Entry requirements Minimum one GCSE at grade 4 and 2 GCSEs at grade 3 (D) including maths and English or Level 1 Diploma in a related subject and Level 1 Functional Skills in maths and English.

Progression Apprenticeship or Level 3 Business.

LEVEL 3**Business Level 3 Extended Diploma**

This course is available at our partner college, King George V at: www.kgv.ac.uk.

Every applicant will need to be interviewed for their chosen course and may need to provide a reference.

> IN TODAY'S BUSINESS CLIMATE THERE HAS NEVER BEEN A BETTER TIME TO STUDY THIS TOPIC.

Jennifer Salcedo

Business and Enterprise Level 3 Extended Diploma/Previous School: Greenbank High School/ I am a young carer so coming to a college that was close to home was really important to me and Southport College offered the exact course I wanted so seemed the obvious choice. I'm really glad I chose to come here! The staff are really nice and helpful and are very knowledgeable about the subject with lots of industry experience and the BTEC course is great! The support I have received as a young carer has been brilliant too – I wouldn't have completed without the support network I've had at college! I am doing a Level 4 Apprenticeship in Business Administration next year and would really like to become an accountant in the future.

COMPUTING & IT

Computing and IT skills are at the centre of everyday life and found in almost all industries and businesses across the world. There are a broad range of specialist areas including programming, web development, network management, cyber security, applications development, telecommunications, internet service provision, computer gaming and more. The Digital Tech sector is expanding 2.6 times faster than the rest of the UK economy and is worth more than £184 billion. Technology moves so fast that Digital Tech companies are always looking for highly skilled employees with the most up-to-date knowledge and understanding. This means that studying an IT or computing course is very desirable, with good career opportunities.

Why choose Southport College?

- > Our Computing and IT department has been part of a £1.3 million refurbishment introducing new, modern teaching and learning environments and well equipped technology workshop.
- > We provide access to live briefs so lessons are not limited to the classroom and we offer students the opportunity to visit places like Disneyland Paris, Museum of Science and Industry, Manchester, CAE Technology Services, the Retro Games Arcade and the 'What next?' careers fair at the Liverpool Exhibition Centre.
- > Our tutors still work in the industry, meaning they are up to date with all the latest developments and can pass this on to our students.
- > We have strong links with businesses and universities, giving our students opportunities such as talks and workshops with representatives from companies including Google and Microsoft.

What will I study?

- > Website design
- > Database design
- > Network design
- > Digital graphics
- > Technical support
- > Software development

Careers after the course

- > IT Technician: £18,000-£30,000
- > Network Engineer: £18,000-£40,00
- > Systems Analyst: £20,000-£45,000
- > Web Designer: £22,000-£30,000

LEVEL 2**IT Level 2****One year**

Entry requirements Minimum one GCSE at grade 4 and two GCSEs at grade 3 (D) including English and maths or Level 1 Diploma in related subject and Level 1 English language and maths.

Progression With a merit, Level 3 Extended Diploma courses such as Computer Science and Technology or Apprenticeship.

LEVEL 3**Computer Science and Technology Level 3 Extended Diploma****Equivalent to Three A Levels (up to 168 UCAS points)****Two years**

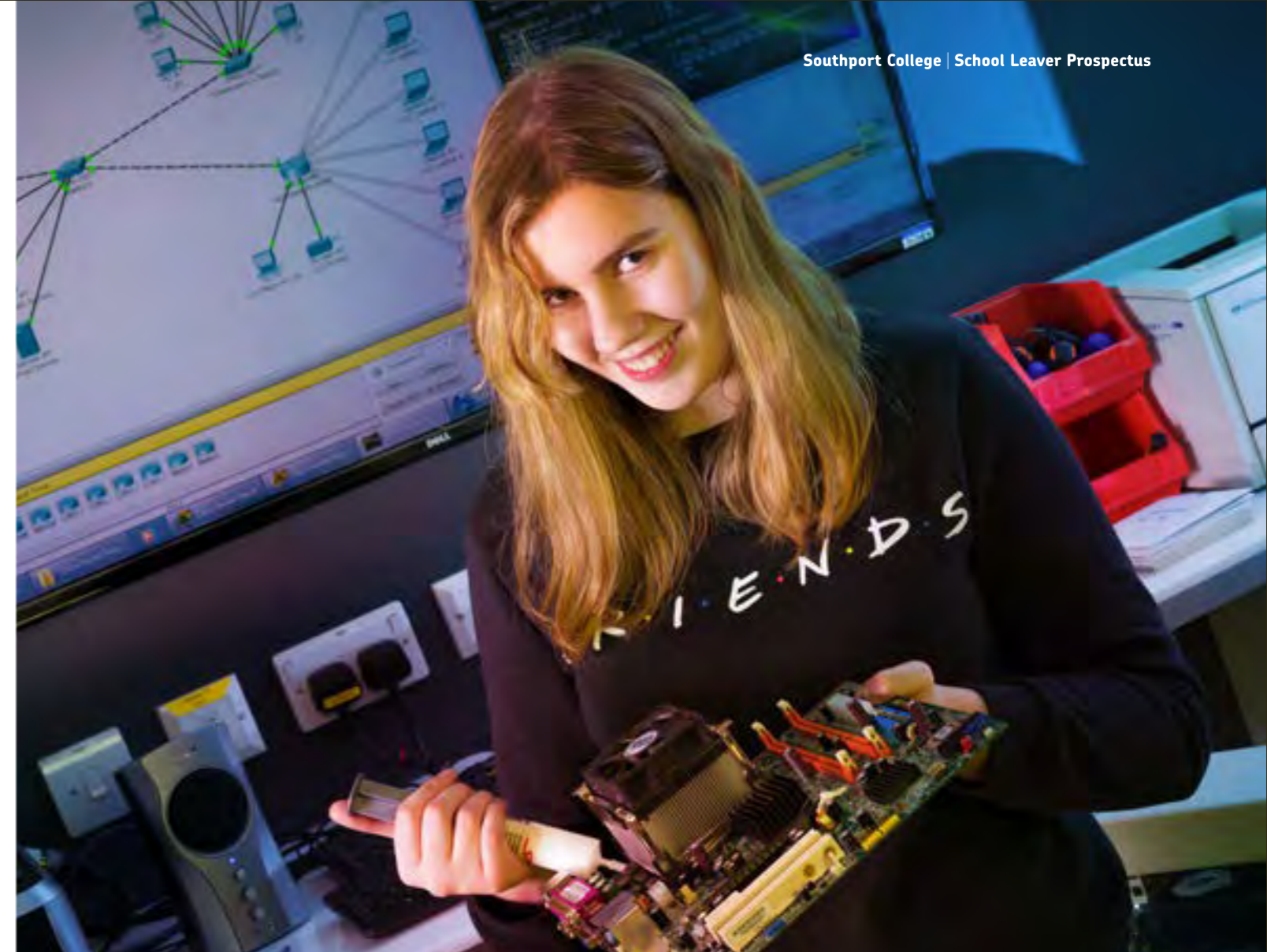
Entry requirements Five GCSEs at grade 9-4 (A*- C) including maths and/or English or pass/merit in a related Level 2 Extended Certificate and English and maths at Level 2.

Progression Employment or university.

Assessment This course contains some externally assessed units.

Every applicant will need to be interviewed for their chosen course and may need to provide a reference.

> THE DIGITAL TECH SECTOR IS EXPANDING 2.6 TIMES FASTER THAN THE REST OF THE UK ECONOMY AND IS WORTH MORE THAN £184 BILLION.

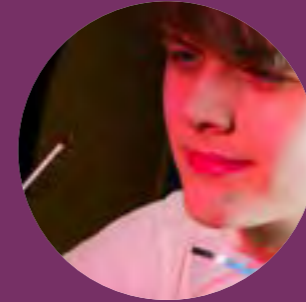


Anna
Johnson

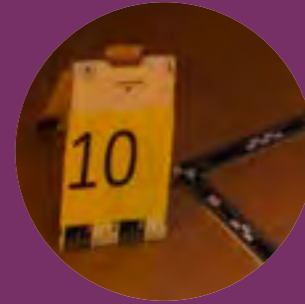
...

Computer Science Level 3 Extended Diploma/Sacred Heart Catholic College/ I had heard nothing but positive comments about Southport College before I joined which is why I applied to study here. The Computer Science course covers a wide variety of topics and has helped me to decide what career I would like to follow in the future. The staff here are great. They are always happy to help and really know their stuff. The facilities are amazing too. We use current and up to date software with plenty of equipment to use too. I will be completing Year 2 of my course here at Southport College next year but in the future would like to go to university to study Computer Security.

110



110
FORENSIC
& CRIMINAL
INVESTIGATION



112
SCIENCE



Elliot Campbell



Forensic and Criminal Investigations Level 3 Extended Diploma/Previous School: Range High School/

"From the moment I attended an Open evening here, I loved Southport College. The location is really good being in the town centre and here is the only place I'd seen that offer a forensics course. I have always wanted to work in the forensics industry so it was perfect for me.

The modules on this course are great and allow you to explore the subject really well and the lessons are very interactive with lots of practical experiences. The facilities are fab too; especially the amazing crime scene room.

The course at Southport College teaches you about the subject and is an amazing starting point for university. It covers such a wide range of topics and is great if you are unsure of what you want to progress onto.

I have an unconditional offer with a scholarship at UCLan to student Criminology and Criminal Investigations next year and I want to join the police once I've finished my degree."

FORENSIC & CRIMINAL INVESTIGATION

The Forensic & Criminal Investigation course at Southport College does not just give you the opportunity to pursue a career in science or forensics it can also lead to a wide range of related careers in criminal behaviour, psychology and policing.

For many jobs leading on from this course you will need to have a degree level qualification and your career choices will depend on your area of interest and the degree course you choose to take. There are a wide range of potential career choices including crime scene investigator, analytical chemist, toxicologist, police officer, criminal intelligence analyst, revenue & customs officer, youth offending team, mental health nurse, crime prevention adviser and more.

Why choose Southport College?

- > Our forensic and criminal investigation course can lead directly onto the policing degrees required to enter the police force.
- > Our Science department has recently expanded to include a brand new additional science laboratory that will benefit students on the Forensic & Criminal Investigation course.
- > Southport College is well established with excellent facilities and continuously high success rates through having the longest running Forensic course in the area.
- > We have an excellent teaching environment with the use of specialist laboratories and a wide range of specialist research resources in our library.
- > We have access to mock crime scenes at various locations to put what you have learned into practice. These are also used for assessments.
- > We work with Cumbria University and Merseyside Constabulary to ensure our forensic programme is realistic and up-to-date.

What will I study?

- > Criminal investigation procedures
- > Forensic investigation procedures
- > Applications of criminology
- > Criminal and forensic psychology

Careers after the course

- > Crime Scene Investigator: £16,000-£33,000
- > Criminal Intelligence Analyst: £25,000-£40,000
- > Forensic Psychologist: £20,000-£70,000
- > Police Officer: £20,000-£40,000
- > Probation Officer: £22,000-£39,000
- > Toxicologist: £20,000-£35,000

LEVEL 3

Forensic & Criminal Investigation Level 3 Extended Diploma Equivalent to three A Levels (up to 168 UCAS points)

Two years

Entry requirements Five GCSEs at grade 9-4 (A*- C) including English and/or maths and science or pass/merit in a related Level 2 Extended Certificate and English and/or maths at Level 2.

Progression University or employment

Every applicant will need to be interviewed for their chosen course and may need to provide a reference.



>OUR SCIENCE DEPARTMENT HAS RECENTLY EXPANDED TO INCLUDE A BRAND NEW ADDITIONAL SCIENCE LABORATORY THAT WILL BENEFIT STUDENTS ON THE FORENSIC & CRIMINAL INVESTIGATION COURSE.

SCIENCE

If you like making discoveries, pushing boundaries and potentially improving or saving the lives of others then a career in science is a great option for you. The science and pharmaceuticals sector is vast covering everything from human biology and environmental conservation to biotechnology and astrophysics. This sector is one of the largest and most important in the UK and students with science degrees are among the most desirable UK graduates and demand for their skills is set to grow even further. For many science related jobs you will need to have a degree level qualification and your career choices will depend on your area of interest and the degree course you choose to take.

Why choose Southport College?

- > Our Science department has recently expanded to include a brand new additional science laboratory that will benefit students on both Applied Science course.
- > The department is well established with excellent facilities and continuously high success rates through having the longest running Science course in the area.
- > We have an excellent teaching environment with the use of specialist laboratories and a wide range of specialist research resources in our library.

What will I study?

- > Science investigation skills
- > Physiology of human body regulations
- > Inorganic and organic chemistry
- > Astronomy and space science
- > Medical physics
- > Contemporary issues in science

Careers after the course

- > Astrophysicist: £19,000-£32,000
- > Chemical Engineer: £29,000-£60,000
- > Marine Biologist: £14,000-£35,000
- > Meteorologist: £20,000-£36,000
- > Toxicologist: £20,000-£35,000
- > Zoologist: £21,000-£48,000

LEVEL 3

Applied Science Level 3 Extended Diploma Equivalent to three A Levels (up to 168 points)

Two years

Entry requirements Five GCSEs at grade 9-4 (A*- C) including English and/or maths and science or pass/merit in a related Level 2 Extended Certificate and English and/or maths at Level 2.

Assessment This course contains some externally assessed units.

Progression University or employment.

Every applicant will need to be interviewed for their chosen course and may need to provide a reference.

Please note: from 2020, the Level 3 Extended Diploma in Science will be taught at the KGV College campus.

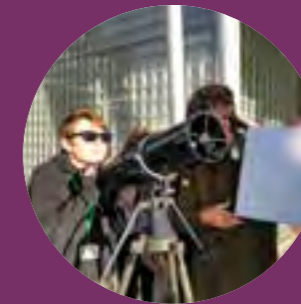
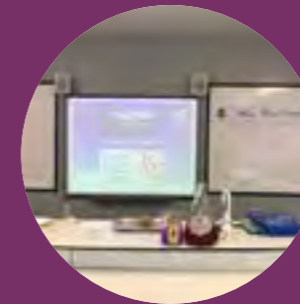
> TO RAISE AWARENESS OF THE EFFECTS OF PLASTIC CONSUMPTION ON THE ENVIRONMENT, STAFF AND STUDENTS ORGANISED A CLEAN-UP OF AINSDALE BEACH. JOINING OTHER VOLUNTEERS, INCLUDING LOCAL MP DAMIEN MOORE, THE SCIENCE STAFF AND STUDENTS GATHERED AS MUCH PLASTIC AND OTHER LITTER AS THEY COULD FIND.



FUNDRAISING EVENTS



ENRICHMENT



Amelia Rossiter



Applied Science Level 3 Extended Diploma/ Previous School: Christ the King Catholic High School/ Science has always been one of my strong subjects and something I am interested in. The BTEC is excellent and has enabled me to study just one subject whilst still getting what I need to go to university. The Science course involves so much practical work which has been one of my favourite parts of the course. Every week we do something new and fun! The course also gives you so many opportunities to progress onto. You can branch off into any area of science that you want. If you prefer a more practical approach, the BTEC is definitely for you. It will still get you to where you want to be; I am going to LJMU next year to study Zoology. Something I never thought I'd be able to do!



Annabelle Rossiter



Applied Science Level 3 Extended Diploma/ Previous School: Christ the King Catholic High School/ I have always had a passion for Science and the BTEC course is the best thing I could have done. This college and in particular the science course has shown me that I have what it takes to go to university and follow my dreams to work in a biomedical lab in the future. The labs at college are the best I have ever seen and the tutors are so knowledgeable. The support I have received at college has been amazing too; not only with my academic work but also with other aspects of life. Thanks to Southport College I am now on my way to my dream career. I am going to LJMU next year to study Biomedical Science and would possibly like to do a Master's Degree in the future too. **Please note that from 2020, the Level 3 Extended Diploma in Science will be taught at the KGV College campus.**

2020 VISION



CONNECT

Both of our Connect courses are designed to give students the confidence and skills to progress on to Entry Level 3 Aspire and then one of our vocational courses as well as moving towards independent living or work experience through a supported internship.

Starting college can be a very daunting experience for many students on our Connect courses, so we take great care in ensuring that the transition from school to college goes as smoothly as possible. We offer group and individual orientation visits and taster days that take place before students come to College full-time in September. These visits help to introduce students to the College at their own pace and are tailor-made to suit them.

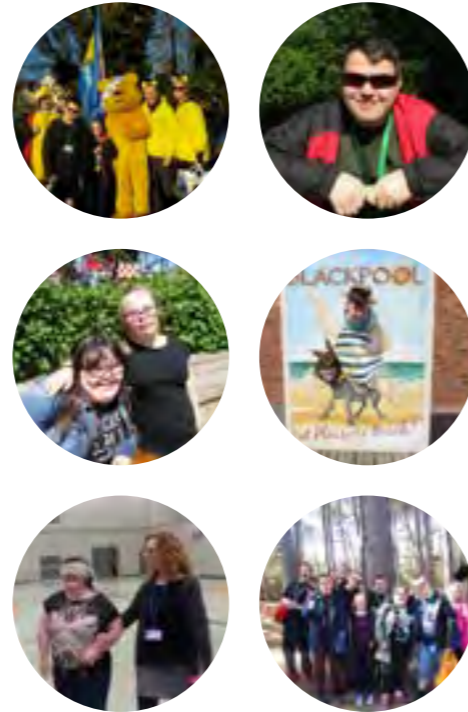
By offering the necessary support and guidance needed to help them to succeed, we ensure many of our students who start on our Connect courses progress through College to higher level courses and on to employment.

Why choose Southport College?

- > There is dedicated classroom space for the Connect courses, with specialist resources and equipment.
- > We offer extensive support in the form of group and 1:1 support as well as lunchtime and break supervision.
- > We have a Transitions Suite in College for students to enjoy some quiet time during break and lunch times.
- > The College has been delivering courses for young people with LDD for many years.
- > As a College we are redeveloping our courses in line with the Government's latest curriculum initiatives.

What we do works

- > **The Two Year Connect Course** A Connect course is for learners who are working towards Entry Level 2. It is tailored to a student's individual needs and focuses on the transition to College from school as well as preparation for their next step. It consists of two 1 year courses dependant on the ability/achievement of students.
 - > **Year 1** The first year is focused on developing life skills such as managing money, being healthy, managing relationships and getting involved in enterprise schemes. Students will develop their independent travel and cookery skills and take part in confidence-building activities. Students will also continue to develop maths and English and have a progress tutor to prepare them for their next step.
 - > **Year 2** This year is determined by the student's progression route; they can study a qualification to prepare them for supported living or the workplace, or can continue to next level of study. Students will also continue to work on improving their maths and English and have tutorials with their progress tutor. A student's second year options are dependent on ability and progression through the first year.



> BY OFFERING THE NECESSARY SUPPORT AND GUIDANCE, WE ENSURE MANY OF OUR STUDENTS WHO START ON OUR CONNECT COURSES PROGRESS THROUGH COLLEGE TO HIGHER LEVEL COURSES OR ON TO EMPLOYMENT.

ENTRY LEVEL 2

Connect (Entry Level 2) Two years

Entry requirements Successful interview, assessment and taster session. Satisfactory reference.

Progression This course is designed to give you the confidence and skills to progress on to the Entry Level 3 Aspire course, or a supported internship or move towards independent living.

Every applicant will need to be interviewed for their chosen course and may need to provide a reference.



Aaron Bishop
...

Previous School: Merefield School/I went to look at some other colleges but Southport College was the best! I chose the Connect course to work on my maths and English and to also be more independent at home and I have really enjoyed it. I've most enjoyed doing lots of sports and practical tasks. The staff are nice and always help you and I've made lots of new friends.



The Aspire course is designed to help students progress towards the world of work and/or Level 1 vocational courses at college. Aspire replaces our entry level courses and is a fantastic option for entry level learners. It allows you to try a range of different subjects before focusing on and progressing in one vocational area.

Why choose Southport College?

- > Realistic working environments
- > Maths and English support
- > Industry-experienced tutors
- > Choice of vocational options
- > Gain employability skills

Regular work placements are arranged for students to develop their knowledge and skills.

What will I study?

- > Diploma in Further Learning & Personal Development which gets you ready for the world of work and helps you to become a more independent mature young adult both in learning and life.
- > English and maths functional skills to help you achieve these important qualifications
- > Progress sessions to ensure you are making good progress on the course

A series of subject tasters.

You can choose five from:

- Bricklaying
- Creative Design
- Hair & Beauty
- Health & Childcare
- Hospitality
- Motor Vehicle Engineering
- Painting & Decorating
- Professional Cookery
- Retail
- Sport

Careers after the course

- > Successful students may be able to progress to a Level 1 course in their chosen vocational area or a supported internship.

ENTRY LEVEL 3

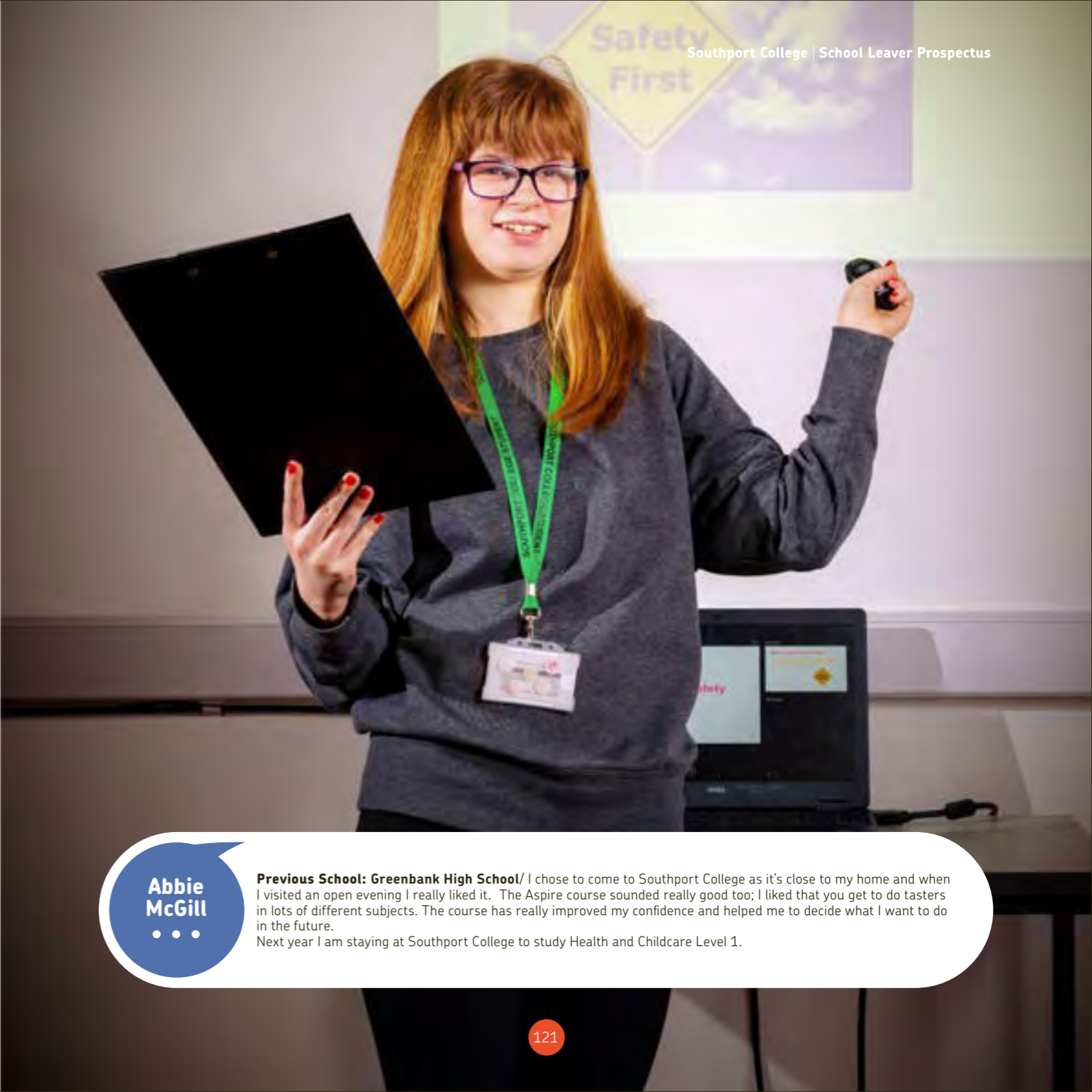
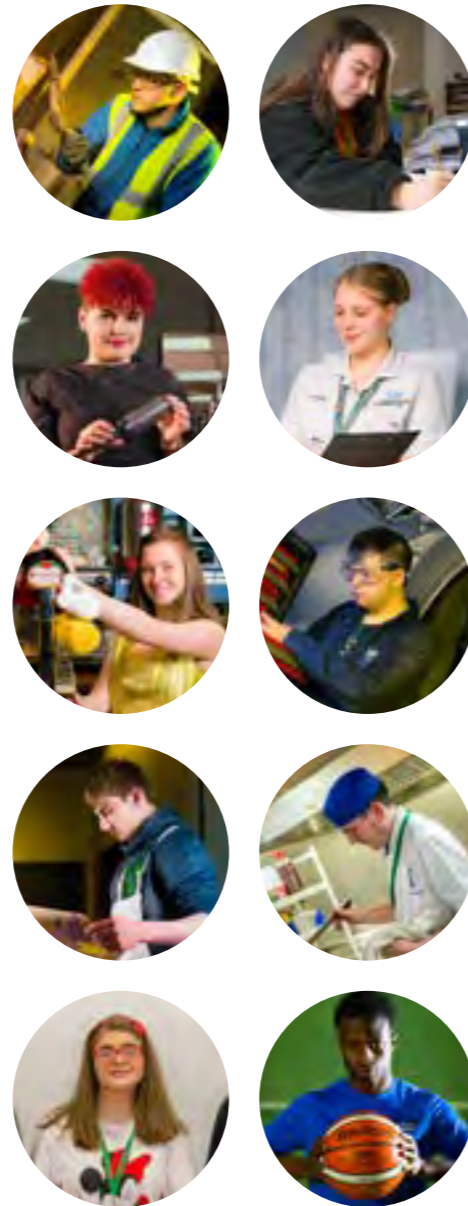
Aspire (Entry Level 3)

One year

Entry requirements Successful interview and assessment. You may also need to provide a satisfactory reference.

Progression Level 1 course/Supported internship.

Every applicant will need to be interviewed for their chosen course and may need to provide a reference.



Previous School: Greenbank High School/ I chose to come to Southport College as it's close to my home and when I visited an open evening I really liked it. The Aspire course sounded really good too; I liked that you get to do tasters in lots of different subjects. The course has really improved my confidence and helped me to decide what I want to do in the future.
Next year I am staying at Southport College to study Health and Childcare Level 1.

AMBITION

Level 1 Pathways

Our Level 1 pathway allows you to study in your chosen vocational area whilst further developing your English, maths and employability skills.

There are eight Level 1 Ambition pathways, the courses take one year to complete and are an introduction to the subject you have chosen to study.

What are the Ambition Level 1 Pathways?

- > Childcare
- > Creative Design
- > Hair & Beauty
- > Health and Social Care
- > Motor Vehicle
- > Painting & Decorating
- > Retail, Business and Enterprise
- > Sport

What will I study?

- > Maths & English
- > Employability skills including:

- Developing interpersonal skills
- Healthy living
- Preparation for work
- Respecting equality and diversity in the workplace
- Safeguarding online and in daily life
- Teamwork skills

- > Students will take also part in a work placement related to their subject
- > You will be in College three days per week until around week 10 when you will start your one day per week work placement. Work placement day is a compulsory part of your course.

What can I do after the course?

- > Successful students may be able to progress to a Level 2 course in their chosen vocational area or a supported internship.

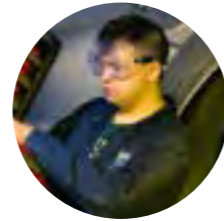
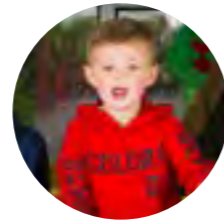
LEVEL 1

Ambition Level 1 One year

Entry requirements Minimum 1 GCSE at grade 3 (E), 2 GCSEs at grade 2 (F) and maths and English at grade 1 or completion of Aspire at Entry Level 3 and maths and English GCSE or equivalent at grade 1.

Progression Level 2 course, employment or Apprenticeship.

Every applicant will need to be interviewed for their chosen course and may need to provide a reference.



Alex Hayes
...

Previous School: Greenbank High School/The tutors at Southport College are brilliant. They are really easy to get on with and have been really supportive. I've really enjoyed the Ambition course. I would recommend anyone to do it; even if it's not your first choice of course! It's really helped me to get to where I want to be in the future. I am staying at Southport College to study Travel and Tourism Level 2 next year and in the future would love to become a Flight Attendant.



126
HOSPITALITY

128
PROFESSIONAL
COOKERY

130
GUEST CHEF
NIGHTS

132
CLOUDS
RESTAURANT

HOSPITALITY

If you love the idea of running a hotel or restaurant then our Hospitality course can be the first step towards your ideal job. Once you've completed your training you can choose from a wide range of job roles and hospitality environments including conference and event centres, cruise ships, theme parks, tourist destinations and resorts as well as restaurants and hotels. The UK hospitality and catering sector is continuing to expand and although it is already a large employer, there is still a high demand for new workers with specialist skills.

Why choose Southport College?

- > As a hospitality student, you will be based in the College's restaurant 'Clouds', preparing for work in the sector by serving paying clients.
- > You will organise and run themed nights in the restaurant such as James Bond, Alice in Wonderland and Murder on the Orient Express.
- > We have regular visits from professional barista and wine sommeliers who pass on their industry knowledge and skills to students through demonstrations and workshops.
- > **You will also undertake a 300 hour work placement.**

What will I study?

- > Food and beverage service skills
- > Barista skills and cocktail mixology
- > Menu knowledge
- > Wine knowledge and bar service
- > Food safety
- > Plan and host themed evenings
- > Supervision of hospitality events
- > Customer service

Careers after the course

- > Events Manager: £18,000-£39,000
- > Bartender : £16,000-£22,000
- > Hotel Manager: £22,000-£50,000
- > Restaurant Manager: £18,000-£40,000
- > Mixologist: £17,000-£20,000

LEVEL 1**Introduction to the Hospitality Industry Level 1****One year**

Entry requirements Three GCSEs at grade 3 (E) and English and maths at grade 2 or equivalent.

Progression Level 2 Food and Beverage Service, Professional Cookery or Internship

LEVEL 2**Professional Food & Beverage Service Level 2****One year**

Entry requirements Minimum one GCSE at grade 4, and two GCSEs at grade 3 (D) including maths and English or Level 1 Diploma in a related subject and Level 1 Functional Skills in maths and English.

Progression Employment/Apprenticeship or Level 3 Supervision of Food & Beverage Service

LEVEL 3**Supervision of Food & Beverage Service****Level 3 Advanced Technical Diploma Equivalent to A Levels****Two years**

Entry requirements Pass at Level 2 in a related subject and a minimum grade 4 in English and/or maths.

Progression Employment or higher education course such as a HNC or HND

Every applicant will need to be interviewed for their chosen course and may need to provide a reference.

Charlotte
Mulhearn

...

Food and Beverage Service Supervision Level 3/Previous School: St Michael's Catholic High School/ I chose to come to Southport College as it was recommended to me as the best place to accommodate the support needs I have and I am really glad I came here. My course has been great and I have really enjoyed myself. It has given me the experience I need to progress. I want to set up my own business traveling around the country catering for different events. The staff are great; if you ever need support they are there to help. They all want you to achieve the best that you can. The college is an excellent place to learn all the skills you need to succeed. I want to come back to Southport College to study the catering course so that I have an all-round knowledge of the industry before starting my business.

PROFESSIONAL
COOKERY

Becoming a Professional Chef is a great career for anyone who loves food and enjoys cooking. From kitchen assistant, sous chef, chef de partie to head or executive chef, there are a wide range of job roles available for those qualified in Professional Cookery. You could find yourself working in a hotel, restaurant, cruise ship, event venue, cafeteria or even a private home. The UK hospitality and catering sector is continuing to expand and although it is already a large employer, there is still a high demand for new workers with specialist skills.

Why choose Southport College?

- > As a Professional cookery student you will use the latest equipment in our modern training kitchens, to prepare food for paying clients in the College's restaurant 'Clouds.'
- > You will learn new skills from regular guest chef demonstrations and contribute to the planning and development of menus for themed nights in our restaurant such as Medieval Banquets, Mad Hatters Tea Party, Into the Blue and Murder on the Orient Express.
- > You will also take part in a 300 hour work placement throughout the year.

What will I study?

- > Master the basics of food preparation
- > Plan your own menus
- > Event planning
- > Prepare advanced dishes
- > Develop recipes and menus
- > Learn how to run the kitchen
- > Demonstrations from chef lecturers

Careers after the course

- > Baker:
£20,000-£37,000
- > Chef de Partie:
£13,000-£25,000
- > Head Chef:
£23,000-£36,000
- > Butcher:
£12,000-£22,000

LEVEL 1

Professional Cookery Level 1**One year**

Entry requirements Three GCSEs at grade 3 (E) and English and maths at grade 2.

Progression Level 2 Professional Cookery, Food & Beverage Service or Apprenticeship

LEVEL 2

Professional Cookery Level 2**One year**

Entry requirements Minimum one GCSE at grade 4 and two GCSEs at grade 3 (D) including English and maths or Level 1 qualification in a related subject.

Progression Employment or Level 3 Professional Cookery, Hospitality or Apprenticeship

LEVEL 3

Professional Cookery Level 3**One year****Equivalent to A Levels**

Entry requirements Pass at Level 2 in a related subject and a minimum grade 4 in English and/or maths.

Progression Employment or university

LEVEL 3

Professional Patisserie & Confectionery**Level 3 Advanced Technical Diploma****Equivalent to A Levels****One year**

Entry requirements Pass at Level 2 in a related subject and a minimum grade 4 in English and/or maths.

Progression Employment or university

Every applicant will need to be interviewed for their chosen course and may need to provide a reference.



Charlie
Stoner
...

Professional Patisserie and Confectionery Level 3/Previous School: Lathom High School/ I chose to do catering at Southport College because I had heard many good things about the course. I completed my Level 3 Patisserie and Confectionery this year. The course itself offered a variety of tasks to complete and I have really enjoyed designing menus for the restaurant services throughout the year. Knowing that I've come up with dishes and genuine customers are tasting them has been amazing! My all-time favourite part if the course has been learning how to use different types of sugar, such as pulled sugar to make roses and pouring sugar to make things such as my tennis rackets. Next year I am going into a full-time job within a pastry section, becoming a pastry chef in a professional kitchen. I recommend this course as it teaches you so much and I have learnt many different techniques and skills which has helped to build my confidence in the kitchen.

GUEST CHEF NIGHTS

As part of their development, our Hospitality and Professional Cookery Students get to experience working with a variety of top professionals, as part of our Guest Chef programme within Clouds Restaurant.

Each year a selection of top chefs from around the country take it in turns to join us and give our students an unforgettable experience and an opportunity to really learn from the best.

Southport's best kept secret...



Steven Doherty

Steven's career began as an 18 year old apprentice at the Savoy in 1976. His career at Le Gavroche began in 1978. He started off as a Commis Chef in the pastry section, finally ending up as Chef de Partie Tournant capable of being responsible for all sections.

Steven became the first ever British Head Chef of a Three Michelin Star establishment. Le Gavroche won every major European food accolade and maintained its three-star status.

In 1991 Steven became only the 5th chef to achieve the Master of Culinary Arts award, of which there are only 20 in the country to date.



Malin De Silva

Born and raised in Sri Lanka, Malin learnt, from his mother, how to grow and cook his own food. Traditional Sri Lankan cuisine is engrained in his childhood memories.

Moving to the UK in 2010, Malin followed his passion for creating the finest cuisine and learning skills from some of the UK's top chefs.

After working in several restaurants in Southport, he has spent the last few years refining his skills at the four rosette, one Michelin starred restaurant 'Matt Worswick at The Latymer' and most recently restaurant 'Fraiche', a four rosette Michelin starred restaurant in the Wirral.

Now Malin is going back to his roots and reconnecting with his Sri Lankan heritage, creating a private dining experience based in Banks called 'Nelum' by Malin de Silva. His new dishes and tasting menus are inspired by the incredible flavours from around Asia.



Jack Bond

Jack joined Southport College to help improve his skill set and knowledge of the industry that he knew he wanted to be a part of. Having known some great chefs had passed through Southport College, he was inspired to follow in their footsteps.

After completing his training at Southport College he went to London to pursue a career working for ex-Southport College student Marcus Wareing. He completed his week trial and Marcus offered him a job at 2-Michelin Starred The Berkeley. During his time in London he covered every section and position in all three of Marcus Wareing's restaurants.

To continue his professional development he went to New York where he worked at 3-Michelin Starred Eleven Madison Park, a New York city restaurant that received the award for 'world's best restaurant.' During his time working there he learnt many things about cooking and behaviour in the industry, many of them echoing what he had been taught at Southport College. He is now back in London where he is currently the sous chef at 2-Michelin Starred 'Marcus'



Tom Baxendale



Pro-cookery Level 3/Previous School: Ormskirk High/ I had heard really good things about the catering courses at Southport College and when I came to Open Evening I was really impressed. I have really enjoyed working as part of a team during the restaurant services; when the service goes well it's such a proud moment. Working in Clouds restaurant on a day to day basis gives students an amazing experience on how the industry works. The industry standard kitchens here are so good. They are really modern and up to date and make it really easy to transfer the skills you've learnt at college to real work. They are staff are very knowledgeable and teach you everything you need to know and are really easy to get on with. The catering course at Southport College is one of the best courses around. It is hard work but very rewarding! If you want to work in the catering industry it will definitely get you to where you want to be.

> ENJOY



CLOUDS RESTAURANT

Clouds is our fully working restaurant that gives Hospitality & Catering students the necessary work experience to be successful within the hospitality and catering industry.

Experience and skills

The students will gain experience in how to run a restaurant and learn crucial event management skills. Clouds has state-of-the-art kitchens for our students to learn with the most up to date equipment.

Opening Times

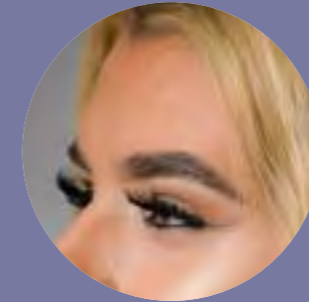
Tuesday and Thursday
Lunch Arrival
12:00pm-12:30pm
Lunch until 2:00pm
Tuesday evening for Private Functions 6.30pm-10.00pm
Wednesday theme nights
6.30pm-10.00pm

Telephone contact:
01704 392676

Southport's best kept secret...



2020 VISION



136
BEAUTY

138
NAILS

140
HAIRDRESSING



142
HAIR & BEAUTY
COMPETITION

144
CONCEPT SALONS



BEAUTY

With a growing appetite for new products, treatments and beauty services in the Beauty sector has experienced continued growth over the last few years. The UK Beauty sector offers many different career opportunities and courses are designed to give you the skills to gain employment in this diverse sector. Students on our Beauty and Nails courses are kept up to date with the latest trends with guidance from employers and HABIA (the hair and beauty industry body).

Once full-qualified you could become a beauty therapist, specialist nail technician, massage therapist, photographic session stylist, makeup artist or salon manager.

Why choose Southport College?

- > You will be based in Concept, our fully operative, working salons. You will learn all aspects of a busy working salon from the reception, to how to use industry-standard equipment.
- > There are regular trips and visits organised so students can find out more about working in the beauty sector. These include events such as Salon International, London and the Professional Beauty Show, Manchester where students are able to sample new products and equipment.
- > Our students take part in professional workshops, charity events and benefit from the industry knowledge of guest speakers and trainers.
- > The tutors have extensive industry experience and have worked either in television, on cruise-liners spa's, salons or on famous brand cosmetic stores.

All students will undertake a mandatory work placement.

What will I study?**Beauty Level 2**

- > Health & Safety
- > Consultation techniques
- > Skin analysis
- > Facial treatments & skincare
- > Make-up application
- > Lash and brow treatments
- > Manicure and pedicure services
- > Waxing
- > Anatomy and physiology
- > Gel polish application
- > Manual tanning

Beauty Level 3

- > Working in beauty related industries
- > Facial electrical treatments
- > Body electrical treatments
- > Body massage
- > Client care and communication
- > Monitor and maintain health and safety practice in the salon
- > Massage using pre-blended aromatherapy oils
- > Individual permanent lash application
- > Micro dermabrasion
- > Anatomy & Physiology

Careers after the course

- > Beauty Therapist: £12,000 - £25,000+
- > TV Makeup Artist: £200 - 300 per day.
- > Beauty Consultant: up to £30,000
- > Nail Technician: £12,000-£25,000
- > Massage Therapist: £20,000-£40,000 (with experience)

LEVEL 1**Hairdressing and Beauty Therapy Level 1 (Ambition)****One year**

Entry requirements Minimum one GCSE at grade 3 (E), two GCSEs at grade 2 (F) or completion of Aspire at Entry Level 3 and maths and English at grade 1.

Progression Level 2 courses such as Hairdressing, Beauty Therapy or Nail Services.

LEVEL 2**Beauty Therapy Level 2 Extended Diploma****One year**

Entry requirements Minimum one GCSE at grade 4 and two GCSEs at grade 3 (D), including English and maths or Level 1 qualification in a related subject with Level 1 Functional Skills in maths and English.

Progression Employment or Level 3 course

LEVEL 3**Beauty Therapy Treatments Level 3 Diploma****One year**

Entry requirements Pass at Level 2 in related subject and a minimum grade 4 in English and/or maths or equivalent.

Progression Employment or university course such as complementary therapies or spa management

Every applicant will need to be interviewed for their chosen course and may need to provide a reference.



Eloise
Yin
...

Beauty Therapy Level 2/Previous School: Greenbank High School/ I have always been interested in Beauty so decided to come to college to follow my dreams. The beauty tutors here are so supportive and the facilities are really good too. We work with industry standard products in a full working salon! I've really enjoyed the course; especially the practical side of it. The hands on experience in Concept salon, salon reception and on my work experience have really helped me to build on my confidence and has allowed me to achieve more than I ever thought I could. I am staying at Southport College next year to do the Level 3 course as I'd like to open my own salon in the future and this will help hugely.

NAILS

Students on our Beauty and Nails courses are kept up to date with the latest trends with guidance from employers and HABIA (the hair and beauty industry body).

Once full-qualified you could become a beauty therapist, specialist nail technician, massage therapist, photographic session stylist, makeup artist or salon manager.

Why choose Southport College?

- > You will be based in Concept, our fully operative, working salons. You will learn all aspects of a busy working salon from the reception, to how to use industry-standard equipment.
- > There are regular trips and visits organised so students can find out more about working in the beauty sector. These include events such as Salon International, London and the Professional Beauty Show, Manchester where students are able to sample new products and equipment.
- > Our students take part in professional workshops, charity events and benefit from the industry knowledge of guest speakers and trainers.
- > The tutors have extensive industry experience and have worked either in television, on cruise-liners spa's, salons and on famous brand cosmetic stores

What will I study?

- > Nail art
- > Applying and maintaining nail enhancements
- > Gel polish application
- > Health and safety
- > Promoting additional products and services
- > Manicure and pedicure

Careers after the course

- > Beauty Therapist: £12,000 - £25,000+
- > TV Makeup Artist: £200 - 300 per day.
- > Beauty Consultant: up to £30,000
- > Nail Technician: £12,000-£25,000
- > Massage Therapist: £20,000-£40,000 (with experience)

> LEVEL 2

**Nail Services Level 2 Diploma
One year**

Entry requirements Minimum one GCSE at grade 4 and two GCSEs at grade 3 (D), including English and maths or Level 1 qualification in a related subject with Level 1 Functional Skills in maths and English.

Progression Employment or further training in Nail Services or Beauty Therapy

Every applicant will need to be interviewed for their chosen course and may need to provide a reference.



Rebecca Aindow

Nail Services Level 2/Previous School: Greenbank High School/ I completed my Beauty Level 2 qualification at Southport College and wanted to further my skill set to improve my career opportunities so stayed to do the Nail Services course. I have really enjoyed the course; especially working with real clients in a professional environment. This has given me the people skills and customer service skills needed in this industry that you can't learn in a classroom! The staff at college are fantastic too. They really care about you as a student and do everything to support you. I am progressing to Level 3 Beauty at Southport College next year. I want to work in a salon to gain more experience but would really like to become self-employed in the future.

HAIRDRESSING

Working as a hairdresser can be an exciting and creative career where you could find yourself working just about anywhere including salons, hotels, cruise ships, film and TV sets, private homes or working for large companies such as L'Oreal or Bed Head. You could become a salon stylist, specialist in colour or extensions, session stylist or open/manage a salon.

Why choose Southport College?

- > As a Hairdressing student you would be based in Concept salons, our fully operative, with paying clients. You will learn all aspects of a busy working Salon and how to use industry-standard equipment.
- > There are regular trips and visits organised so students can find out more about working in the hair and beauty sector. These include events such as the Blackpool Hair Show, Salon International, London and the Professional Beauty Show, Manchester where students are able to sample new products and equipment.
- > Our hairdressing students take part in themed competitions, with industry professionals judging their creations. They also take part in professional workshops, charity events and benefit from the industry knowledge of guest speakers and trainers. The compulsory work placement provides valuable hands on experience.
- > The tutors have extensive industry experience and tutors have opened their own salons, been featured in magazines, cut and styled celebrities hair and won styling awards.

What will I study?

- > Shampooing and conditioning
- > Cutting and styling
- > Setting and dressing hair
- > Hair colouring
- > Drying and finishing hair
- > Gaining experience in supervisory roles
- > Perming
- > Adding hair extensions
- > Day to day running of salon during extended work placement

Level 2 students will take part in a 350 hour compulsory work placement.

Careers after the course

- > Barber or Hair Stylist: £14,000 - £30,000+
- > Specialist technician in colour or extensions: £20,000+
- > Session stylists: £500+ per day
- > If you go on to open your own salon then these amounts can rise significantly.

LEVEL 1**Hairdressing and Beauty Therapy Level 1 (Ambition)****One year**

Entry requirements Minimum one GCSE at grade 3 (E), two GCSEs at grade 2 (F) and maths and English at grade 1 or completion of the Aspire course at Entry Level 3 and English and maths at grade 1.

Progression Level 2 courses such as Hairdressing, Beauty Therapy

LEVEL 2**Hairdressing Level 2 Technical Qualification****One year**

Entry requirements Minimum one GCSE at grade 4 and two GCSEs at grade 3 (D), including English and maths or Level 1 Diploma in a related subject.

Progression Employment/Apprenticeship at Level 3.

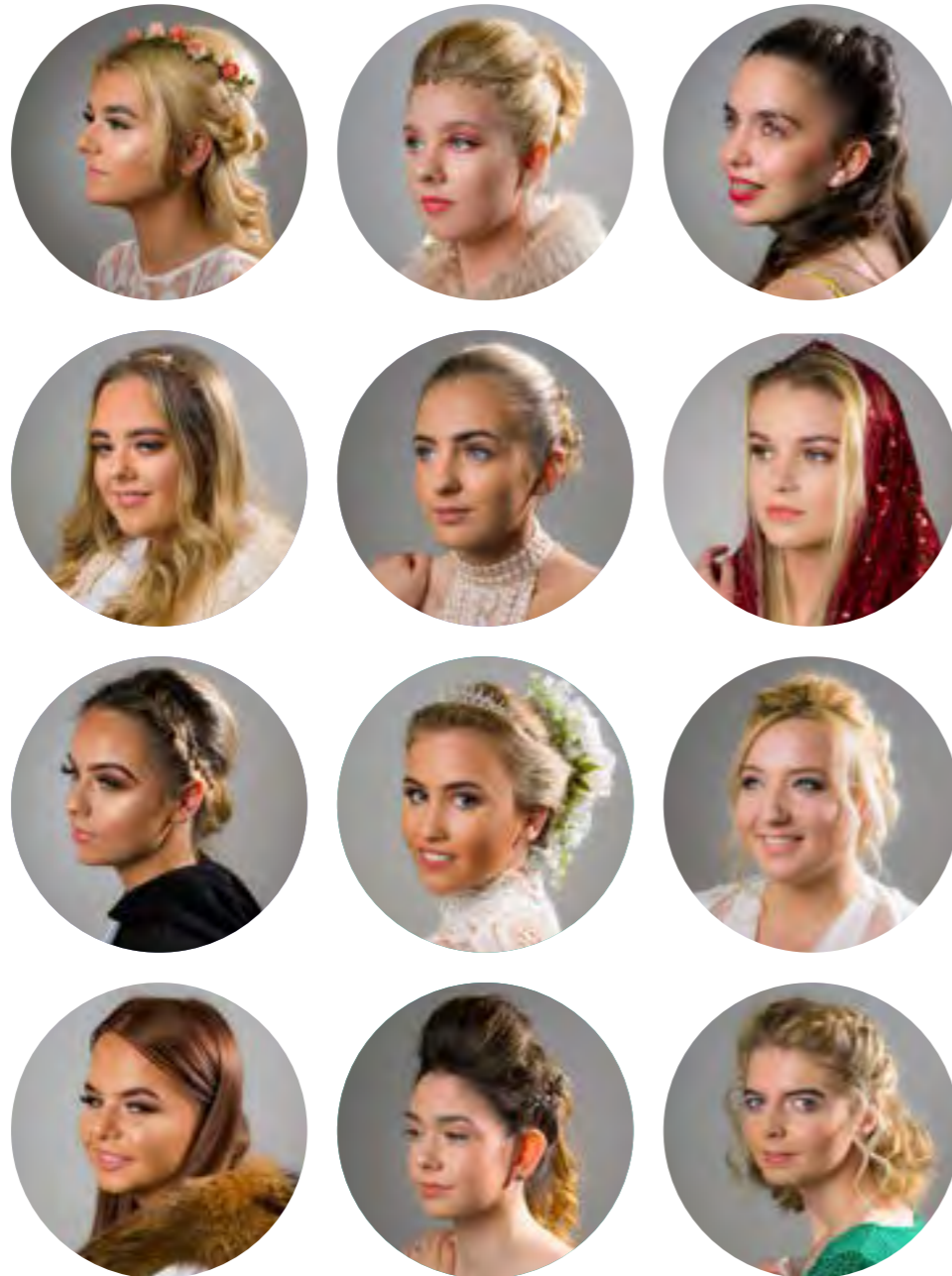
> YOU COULD BECOME A SALON STYLIST, SPECIALIST IN COLOUR OR EXTENSIONS, SESSION STYLIST OR OPEN/MANAGE A SALON.

Bebiana
Moreira

Hairdressing Level 2/Previous School: Tarleton Academy/I have always wanted to be a hairdresser so this course was perfect for me. Doing the course has given me the essential knowledge needed to succeed in the industry and taught me how to work with people and customers which is essential in this job. I have also made some great friends on this course! The staff here are amazing; very supportive and make time for everyone and working in Concept Salon has been great. I have loved our practical sessions, especially colouring hair. I am progressing to a Level 3 Apprenticeship next year; hopefully in Headlines salon in Tarleton where I currently do my placements. I'd like to open my own salon in the future.

HAIR & BEAUTY
COMPETITION

Hair & Beauty students at Southport College are given the opportunity to demonstrate their skills and express their creativity by taking part in our annual hair competition. The students design a concept, within the guidelines of the competition theme, working on the hair, make-up and styling of their models. Their innovative style creations are then judged by a panel of industry experts. The theme for 2019 was 'Brides of the World.' It was a fantastic event and all the entries were of a really high standard.



2019
WINNERS

CONCEPT SALONS

Our hairdressing and barbering students are able to gain a wealth of hands on experience with real paying clients in our Industry standard Concept Salons. First, second and third year students provide a host of services, from a classic cut to contemporary colouring, perming or highlights, all of course with support and close supervision from our highly experienced staff. It's a fantastic way for our students to gain real salon experience and for our customers to enjoy salon treatments at a substantially reduced cost.

Opening times
Our Concept Salons are open daily during term times and also on selected evenings. To check opening times or to make an appointment call Concept salon reception on 01704 392660 or visit: www.southport.ac.uk



FOR WOMEN
CONCEPT
FOR MEN



GETTING IT RIGHT

> AT SOUTHPORT COLLEGE WE WANT TO MAKE SURE WE ARE GETTING THINGS RIGHT, SO EACH YEAR WE ASK THE PARENTS/GUARDIANS OF OUR STUDENTS TO TELL US WHAT THEY THINK. HERE'S WHAT SOME OF THE PARENTS SAID ABOUT US:



CREATIVE MEDIA

"Since joining Southport College I have seen a dramatic difference in my son. He is so engaged with this course, he's made some great friends and he's just really happy and interested in what he's doing. His tutors have been a fantastic support and he really likes and respects them."

CHILDCARE

"My daughter was unhappy at high school but since being at Southport College she has built confidence, acquired friends and is now a happy teenager. Thank you"

COMPUTING

"We are delighted with all aspects of Southport College, in particular with the tutors. Our daughter has blossomed in confidence and enjoys the environment making super progress. We couldn't ask for more. Thank you everyone."

PLUMBING

"My son has been treated with respect at Southport College - something which is very important to him. He has matured and grown in confidence. It's never been an issue getting him to attend. Brilliant job Southport College and all his tutors!"

ASPIRE

"I have found staff at Southport College to be very friendly and approachable. They put everything into helping each individual student to achieve their personal best."

PERFORMING ARTS

"My son has made great progress at Southport College, he is now more confident due to the encouragement and support of the staff. I'm a proud mum!"

HEALTH & SOCIAL CARE

"It has been a very well organised, smooth pathway for my daughter through her first year. No complaints from her so all must be good."

PUBLIC SERVICES

"My son has settled in fast, thrived and exceeded his expectations on a course which is enjoyable and challenging. He gets on well with his tutors and peers as there is an atmosphere of mutual respect."

GETTING TO SOUTHPORT COLLEGE

The College (Mornington Road, Southport, PR9 0TT) is easily accessible by public transport and is very close to Southport town centre.

Further Information

Check out the public transport options from your area. www.traveline.org.uk is a good place to start. Make sure you find out if your chosen public transport operator offers a student ticket or a regular user discount.

- www.arrivabus.co.uk
- www.merseyrail.org
- www.stagecoachbus.com
- www.merseytravel.gov.uk

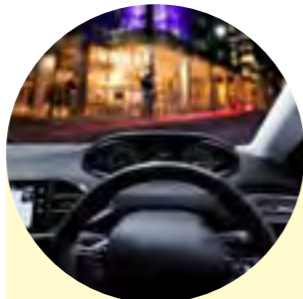


STUDENT TRAVEL PASS

All full-time students* who live more than 1 mile from the Southport campus on Mornington Road are eligible to apply for a free annual travel pass. The travel pass provides students with free term-time travel on Merseyrail, Arriva or Stagecoach networks.

*Students aged 16-18 who live more than 3 miles away from the College are eligible for travel passes (or funds where necessary). Students who live 1 to 2.9 miles away from the College and are aged 16-18 are means-tested (to assess for eligibility) before passes are issued. Students aged 19 and over will be means-tested to assess for eligibility before passes are issued.

Additional information is available on the application form or by contacting The Student Information Centre.



By Car

Southport is accessed via the A565 from both the north (Preston) and the south (Liverpool) and by the A570 (Ormskirk and the M58).

The College is situated off Lord Street, on Mornington Road. Visitors attending our open evenings throughout the year are able to access free on-site parking. For Satnav: enter our postcode PR9 0TT



By Train

A five-minute walk from the College, Southport station is accessible from all stations towards Liverpool and Hunts Cross through Merseyrail's Northern Line service. There are also Northern Rail trains linking the College to Burscough, Appley Bridge, Wigan and other stations towards Manchester.



By Bus

Buses from across the region stop regularly on Lord Street, a five-minute walk from the College.

- From Tarleton/Hesketh Bank: 2X, 2
- From Ormskirk/Skelmersdale: 375, 385
- From Maghull: 300
- From Crosby: X2
- From Bootle: 300, X2



By Bike

If you wish to use your bicycle to travel to College there are secure bike storage facilities on-site.



OPEN EVENINGS 2019/20

Tuesday
8 October 2019
5.00pm-8.00pm

Monday
25 November 2019
5.00pm-8.00pm

Tuesday
3 March 2020
5.00pm-8.00pm

Monday
1 June 2020
5.00pm-8.00pm

Open Evenings take place at our campus on Morningson Road, Southport, PR9 0TT

KEEP IN TOUCH

Follow us on Twitter, Facebook and Instagram where we post all the latest news and photos from Southport College.

Facebook @
SouthportCollege

Twitter @SouthportColl

Instagram @
SouthportCollegeOfficial

ACCESS FOR ALL

Southport College is committed to equality and diversity. The College is dedicated to the active pursuit of an equal opportunities policy which addresses the need and right of everyone in the College to be treated with respect and dignity, in an environment in which a diversity of backgrounds and experiences is valued.

If this publication is required in an alternative format or language, or you wish to discuss any other specific requirements or adjustments for joining one of our courses, please contact our Student Information Centre on 01704 392704.

IMPORTANT DETAILS

Information is correct at the time of going to press. Every effort is made to ensure accuracy. The College reserves the right to withdraw or amend courses, entry requirements, fees and details included in this publication, or any other supporting publications or advertisements.

Courses are offered subject to viability of group size, minimum and maximum numbers, as defined by the College. Acceptance on to a course is at the discretion of Southport College.

All Southport College students are subject to the College's policies and procedures. Other terms and conditions may apply.

This publication, produced in August 2019, supersedes any other publication or advertisement promoting these courses. © Southport College 2019

IF YOU'D LIKE TO KNOW MORE ABOUT OUR SCHOOL LEAVER COURSES VISIT US AT ONE OF OUR OPEN EVENINGS. THEY ARE A GREAT OPPORTUNITY TO MEET OUR TUTORS, SEE OUR FACILITIES, TALK TO STUDENTS AND FIND OUT ABOUT OUR COURSES.



OPEN EVENINGS
2019/20

Tuesday
8 October 2019
5.00pm-8.00pm

Monday
25 November 2019
5.00pm-8.00pm

Tuesday
3 March 2020
5.00pm-8.00pm

Monday
1 June 2020
5.00pm-8.00pm

Open Evenings take place at
our campus on Mornington
Road, Southport, PR9 0TT